



# EXPANSION JOINTS

3.15

## Diesel Multi-ply Expansion Joint (DMEJ)

### Expansion Joint - DMEJ

**Part No.:** DMEJ

**Construction:** Convoluted

**Material:** 304, 321, 316, Incoloy, Inconel, Nickel, Hastelloy

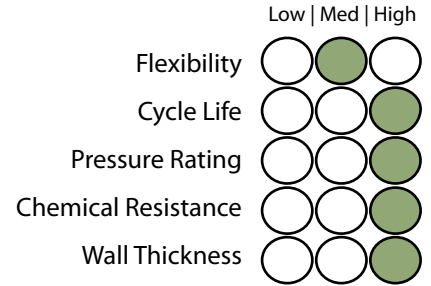
**Profile:** Medium Flexibility / High Pressure

**Liner:** Standard Flow Liner

**Size Available:** 2" - 60"

(Larger sizes upon Request)

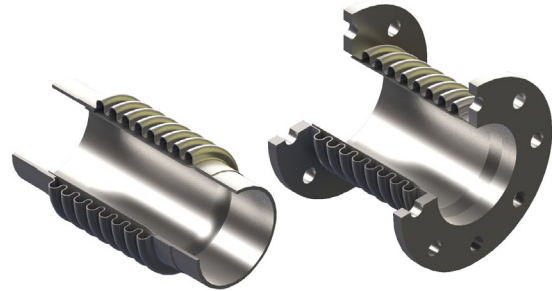
**Temperature:** -196°C +900°C



#### Construction

#### Use:

Used for vibration and absorbing thermal expansion in exhaust, gas ducting and low pressure systems. Relieves stresses caused by vibration. Specially designed multi ply element. Internal flow liners for eliminating velocity and flow problems fitted as standard.



#### Specifications

Part Number	Nom	Length		Max. Working Pressure	Movements			Spring Rate	Pressure Thrust
	Bore	Flanged	Weld Ends		Axial	Lateral	Angular		
	(mm)	(mm)	(mm)		(mm)	(mm)	(Deg)		
50 DMEJ-100	50	145	218	100	16	4	12	59	0.4
65 DMEJ-100	65	180	234	100	29	5	14	36	0.7
80 DMEJ-100	80	180	240	100	26	6	14	26	0.9
100 DMEJ-100	100	190	278	100	28	6	14	63	1.4
125 DMEJ-100	125	215	313	100	28	7	14	69	2.0
150 DMEJ-100	150	215	338	100	26	8	14	78	2.8
200 DMEJ-100	200	225	330	100	39	8	13	106	4.7
250 DMEJ-100	250	330	400	100	84	10	14	38	7.4
300 DMEJ-100	300	330	400	100	86	11	14	44	10
350 DMEJ-100	350	330	400	100	88	11	14	46	12
400 DMEJ-100	400	330	400	100	76	10	13	64	15
450 DMEJ-100	450	330	400	100	78	11	13	68	19
500 DMEJ-100	500	330	400	100	81	12	13	75	23
600 DMEJ-100	600	330	400	100	84	10	12	88	33
650 DMEJ-100	650	400	460	100	84	10	14	132	38
700 DMEJ-100	700	400	460	100	84	10	14	136	43
750 DMEJ-100	750	400	490	100	96	12	14	123	50
800 DMEJ-100	800	400	490	100	96	12	14	129	58
850 DMEJ-100	850	400	490	100	98	11	13	139	64
900 DMEJ-100	900	400	490	100	98	10	13	146	71
950 DMEJ-100	950	400	490	100	90	10	13	153	79
1000 DMEJ-100	1000	400	490	100	90	9	10	166	85
1050 DMEJ-100	1050	400	490	100	90	8	10	164	96
1100 DMEJ-100	1100	400	490	100	96	9	9	171	116

EXPANSION JOINTS 1 2 3 4 5 6 7 8 9 10

Part Number	Nom	Length		Max. Working Pressure kPa	Movements			Spring Rate N/MM	Pressure Thrust KN
	Bore	Flanged	Weld Ends		Axial	Lateral	Angular		
	(mm)	(mm)	(mm)		(mm)	(mm)	(Deg)		
1150 DMEJ-100	1150	400	490	100	96	9	9	177	125
1200 DMEJ-100	1200	490	490	100	106	8	9	267	131
1250 DMEJ-100	1250	490	600	100	106	8	8	290	143
1300 DMEJ-100	1300	490	600	100	111	10	8	303	155
1350 DMEJ-100	350	490	600	100	113	10	6	318	167
1400 DMEJ-100	1400	490	600	100	113	10	6	322	179
1450 DMEJ-100	1450	490	600	100	127	9	5	347	183
1500 DMEJ-100	1500	490	600	100	127	9	5	371	202

#### Applications

