



EXPANSION JOINTS

3.21

Single Hinge Expansion Joint (HEJ)

Expansion Joint - HEJ

Part No.: HEJ

Construction: Convoluted

Material: 304, 321, 316, Incoloy, Inconel, Nickel, Hastelloy

Profile: Medium Flexibility / High Pressure

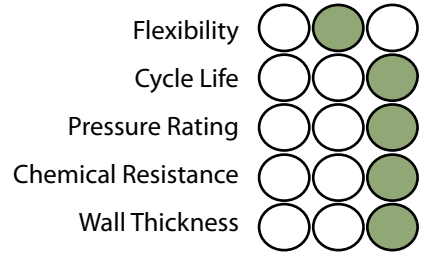
Liner: Optional

Size Available: 2" - 24"

(Larger sizes upon Request)

Temperature: -196°C +900°C

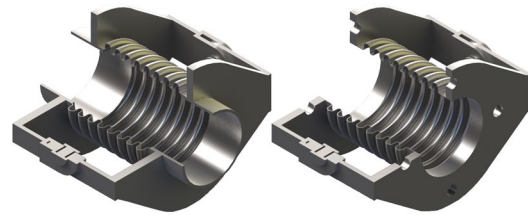
Low | Med | High



Construction

Use:

Used for absorbing angular movement in one plane only, movement of bellows is more controlled. Pressure thrust is restrained by the hinges.



Specifications

Part Number	Nom	Length		Max. Working Pressure kPa	Movements		Spring Rate NM/Deg
	Bore	Flanged	Weld Ends		± Degrees	Total Degrees	
	(mm)	(mm)	(mm)		(mm)	(mm)	
50-HEJ-240	50	145	218	240	18	36	0.2
50-HEJ-700	50	145	218	700	18	36	0.6
50-HEJ-1400	50	145	218	1400	18	36	0.6
65-HEJ-240	65	180	234	240	18	36	0.2
65-HEJ-700	65	180	234	700	18	36	0.7
65-HEJ-1400	65	180	234	1400	18	36	1.3
80-HEJ-240	80	180	240	240	18	36	0.2
80-HEJ-700	80	180	240	700	18	36	0.6
80-HEJ-1400	80	180	240	1400	17	34	2.2
100-HEJ-240	100	190	278	240	18	36	0.3
100-HEJ-700	100	190	278	700	18	36	2.2
100-HEJ-1400	100	190	278	1400	17	34	4.6
125-HEJ-240	125	215	313	240	18	36	1.9
125-HEJ-700	125	215	313	700	18	36	3.4
125-HEJ-1400	125	215	313	1400	14	28	6.6
150-HEJ-240	150	215	338	240	18	36	2.3
150-HEJ-700	150	215	338	700	18	36	3.9
150-HEJ-1400	150	215	338	1400	14	28	18.2
200-HEJ-240	200	225	330	240	18	36	2.6
200-HEJ-700	200	255	330	700	17	34	9.8
200-HEJ-1400	200	255	330	1400	13	26	50
250-HEJ-240	250	245	341	240	18	36	4
250-HEJ-700	250	245	341	700	18	36	17
250-HEJ-1400	250	245	341	1400	13	26	42

EXPANSION JOINTS 1 2 3 4 5 6 7 8 9 10

Part Number	Nom	Length		Max. Working Pressure kPa	Movements		Spring Rate NM/Deg
	Bore	Flanged	Weld Ends		± Degrees	Total Degrees	
	(mm)	(mm)	(mm)		(mm)	(mm)	
300-HEJ-240	300	280	400	240	18	36	6
300-HEJ-700	300	280	400	700	17	34	23
300-HEJ-700	300	400	400	1400	13	26	58
350-HEJ-240	350	400	540	240	18	36	14
350-HEJ-700	350	400	540	700	15	30	30
350-HEJ-1400	350	400	540	1400	12	24	170
400-HEJ-240	400	400	540	240	17	34	26
400-HEJ-700	400	400	540	700	12	24	132
400-HEJ-1400	400	400	540	1400	10	20	308
450-HEJ-240	450	450	590	240	15	30	36
450-HEJ-700	450	450	590	700	11	22	186
450-HEJ-1400	450	450	590	1400	8	16	436
500-HEJ-240	500	450	590	240	14	28	35
500-HEJ-700	500	450	590	700	12	24	176
500-HEJ-1400	500	450	590	1400	8	16	595
600-HEJ-240	600	450	590	240	12	24	59
600-HEJ-700	600	450	590	700	10	20	303
600-HEJ-1400	600	450	590	1400	7	14	1015

Applications

