

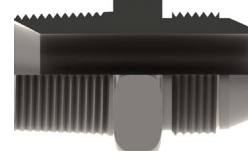
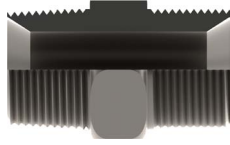
PART NUMBER	BSPT SEATED 316 S/S HEX MALE x HYDRAULIC HOSETAIL
AF16SHH-0202-BTS	1/8" x 1/8"
AF16SHH-0203-BTS	1/8" x 3/16"
AF16SHH-0204-BTS	1/8" x 1/4"
AF16SHH-0404-BTS	1/4" x 1/4"
AF16SHH-0405-BTS	1/4" x 5/16"
AF16SHH-0406-BTS	1/4" x 3/8"
AF16SHH-0604-BTS	3/8" x 1/4"
AF16SHH-0606-BTS	3/8" x 3/8"
AF16SHH-0608-BTS	3/8" x 1/2"
AF16SHH-0804-BTS	1/2" x 1/4"
AF16SHH-0806-BTS	1/2" x 3/8"
AF16SHH-0808-BTS	1/2" x 1/2"
AF16SHH-0812-BTS	1/2" x 3/4"
AF16SHH-0816-BTS	1/2" x 1"
AF16SHH-1206-BTS	3/4" x 3/8"
AF16SHH-1208-BTS	3/4" x 1/2"
AF16SHH-1212-BTS	3/4" x 3/4"
AF16SHH-1216-BTS	3/4" x 1"
AF16SHH-1608-BTS	1" x 1/2"
AF16SHH-1612-BTS	1" x 3/4"
AF16SHH-1616-BTS	1" x 1"
AF16SHH-1620-BTS	1" x 1 1/4"
AF16SHH-2016-BTS	1 1/4" x 1"
AF16SHH-2020-BTS	1 1/4" x 1 1/4"
AF16SHH-2024-BTS	1 1/4" x 1 1/2"
AF16SHH-2420-BTS	1 1/2" x 1 1/4"
AF16SHH-2424-BTS	1 1/2" x 1 1/2"
AF16SHH-2432-BTS	1 1/2" x 2"
AF16SHH-3220-BTS	2" x 1 1/4"
AF16SHH-3224-BTS	2" x 1 1/2"
AF16SHH-3232-BTS	2" x 2"

PART NUMBER	BSPP CONE SEAT 316 S/S FEMALE SWIVEL x HYDRAULIC HOSETAIL
AF26SHH-0202-BPCS	1/8" x 1/8"
AF26SHH-0203-BPCS	1/8" x 3/16"
AF26SHH-0204-BPCS	1/8" x 1/4"
AF26SHH-0403-BPCS	1/4" x 3/16"
AF26SHH-0404-BPCS	1/4" x 1/4"
AF26SHH-0406-BPCS	1/4" x 3/8"
AF26SHH-0604-BPCS	3/8" x 1/4"
AF26SHH-0606-BPCS	3/8" x 3/8"
AF26SHH-0608-BPCS	3/8" x 1/2"
AF26SHH-0804-BPCS	1/2" x 1/4"
AF26SHH-0806-BPCS	1/2" x 3/8"
AF26SHH-0808-BPCS	1/2" x 1/2"
AF26SHH-0812-BPCS	1/2" x 3/4"
AF26SHH-0816-BPCS	1/2" x 1"
AF26SHH-1206-BPCS	3/4" x 3/8"
AF26SHH-1208-BPCS	3/4" x 1/2"
AF26SHH-1212-BPCS	3/4" x 3/4"
AF26SHH-1216-BPCS	3/4" x 1"
AF26SHH-1608-BPCS	1" x 1/2"
AF26SHH-1612-BPCS	1" x 3/4"
AF26SHH-1616-BPCS	1" x 1"
AF26SHH-1620-BPCS	1" x 1 1/4"
AF26SHH-2016-BPCS	1 1/4" x 1"
AF26SHH-2020-BPCS	1 1/4" x 1 1/4"
AF26SHH-2024-BPCS	1 1/4" x 1 1/2"
AF26SHH-2420-BPCS	1 1/2" x 1 1/4"
AF26SHH-2424-BPCS	1 1/2" x 1 1/2"
AF26SHH-2432-BPCS	1 1/2" x 2"
AF26SHH-3220-BPCS	2" x 1 1/4"
AF26SHH-3224-BPCS	2" x 1 1/2"
AF26SHH-3232-BPCS	2" x 2"



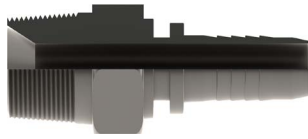
PART NUMBER	BSPP SEATED 316 S/S FEMALE SWIVEL x 90° SWEPT BEND x HYDRAULIC HOSETAIL
AF26S90HH-0202-BPS	1/8" x 1/8"
AF26S90HH-0203-BPS	1/8" x 3/16"
AF26S90HH-0204-BPS	1/8" x 1/4"
AF26S90HH-0403-BPS	1/4" x 3/16"
AF26S90HH-0404-BPS	1/4" x 1/4"
AF26S90HH-0406-BPS	1/4" x 3/8"
AF26S90HH-0604-BPS	3/8" x 1/4"
AF26S90HH-0606-BPS	3/8" x 3/8"
AF26S90HH-0608-BPS	3/8" x 1/2"
AF26S90HH-0804-BPS	1/2" x 1/4"
AF26S90HH-0806-BPS	1/2" x 3/8"
AF26S90HH-0808-BPS	1/2" x 1/2"
AF26S90HH-0812-BPS	1/2" x 3/4"
AF26S90HH-0816-BPS	1/2" x 1"
AF26S90HH-1206-BPS	3/4" x 3/8"
AF26S90HH-1208-BPS	3/4" x 1/2"
AF26S90HH-1212-BPS	3/4" x 3/4"
AF26S90HH-1216-BPS	3/4" x 1"
AF26S90HH-1608-BPS	1" x 1/2"
AF26S90HH-1612-BPS	1" x 3/4"
AF26S90HH-1616-BPS	1" x 1"
AF26S90HH-1620-BPS	1" x 1 1/4"
AF26S90HH-2016-BPS	1 1/4" x 1"
AF26S90HH-2020-BPS	1 1/4" x 1 1/4"
AF26S90HH-2024-BPS	1 1/4" x 1 1/2"
AF26S90HH-2420-BPS	1 1/2" x 1 1/4"
AF26S90HH-2424-BPS	1 1/2" x 1 1/2"
AF26S90HH-2432-BPS	1 1/2" x 2"
AF26S90HH-3220-BPS	2" x 1 1/4"
AF26S90HH-3224-BPS	2" x 1 1/2"
AF26S90HH-3232-BPS	2" x 2"

PART NUMBER	BSPP SEATED 316 S/S FEMALE SWIVEL x 45° SWEPT BEND x HYDRAULIC HOSETAIL
AF26S45HH-0202-BPS	1/8" x 1/8"
AF26S45HH-0203-BPS	1/8" x 3/16"
AF26S45HH-0204-BPS	1/8" x 1/4"
AF26S45HH-0403-BPS	1/4" x 3/16"
AF26S45HH-0404-BPS	1/4" x 1/4"
AF26S45HH-0406-BPS	1/4" x 3/8"
AF26S45HH-0604-BPS	3/8" x 1/4"
AF26S45HH-0606-BPS	3/8" x 3/8"
AF26S45HH-0608-BPS	3/8" x 1/2"
AF26S45HH-0804-BPS	1/2" x 1/4"
AF26S45HH-0806-BPS	1/2" x 3/8"
AF26S45HH-0808-BPS	1/2" x 1/2"
AF26S45HH-0812-BPS	1/2" x 3/4"
AF26S45HH-0816-BPS	1/2" x 1"
AF26S45HH-1206-BPS	3/4" x 3/8"
AF26S45HH-1208-BPS	3/4" x 1/2"
AF26S45HH-1212-BPS	3/4" x 3/4"
AF26S45HH-1216-BPS	3/4" x 1"
AF26S45HH-1608-BPS	1" x 1/2"
AF26S45HH-1612-BPS	1" x 3/4"
AF26S45HH-1616-BPS	1" x 1"
AF26S45HH-1620-BPS	1" x 1 1/4"
AF26S45HH-2016-BPS	1 1/4" x 1"
AF26S45HH-2020-BPS	1 1/4" x 1 1/4"
AF26S45HH-2024-BPS	1 1/4" x 1 1/2"
AF26S45HH-2420-BPS	1 1/2" x 1 1/4"
AF26S45HH-2424-BPS	1 1/2" x 1 1/2"
AF26S45HH-2432-BPS	1 1/2" x 2"
AF26S45HH-3220-BPS	2" x 1 1/4"
AF26S45HH-3224-BPS	2" x 1 1/2"
AF26S45HH-3232-BPS	2" x 2"



PART NUMBER	BSPT/P 3000 lb 316 S/S SEATED HEX MALE NIPPLE
HMN6S-0202-BT3SBP3S	1/8" x 1/8"
HMN6S-0402-BT3SBP3S	1/4" x 1/8"
HMN6S-0404-BT3SBP3S	1/4" x 1/4"
HMN6S-0602-BT3SBP3S	3/8" x 1/8"
HMN6S-0604-BT3SBP3S	3/8" x 1/4"
HMN6S-0606-BT3SBP3S	3/8" x 3/8"
HMN6S-0804-BT3SBP3S	1/2" x 1/4"
HMN6S-0806-BT3SBP3S	1/2" x 3/8"
HMN6S-0808-BT3SBP3S	1/2" x 1/2"
HMN6S-1010-BT3SBP3S	5/8" x 5/8"
HMN6S-1206-BT3SBP3S	3/4" x 3/8"
HMN6S-1208-BT3SBP3S	3/4" x 1/2"
HMN6S-1212-BT3SBP3S	3/4" x 3/4"
HMN6S-1608-BT3SBP3S	1" x 1/2"
HMN6S-1612-BT3SBP3S	1" x 3/4"
HMN6S-1616-BT3SBP3S	1" x 1"
HMN6S-2012-BT3SBP3S	1 1/4" x 3/4"
HMN6S-2016-BT3SBP3S	1 1/4" x 1"
HMN6S-2020-BT3SBP3S	1 1/4" x 1 1/4"
HMN6S-2412-BT3SBP3S	1 1/2" x 3/4"
HMN6S-2416-BT3SBP3S	1 1/2" x 1"
HMN6S-2420-BT3SBP3S	1 1/2" x 1 1/4"
HMN6S-2424-BT3SBP3S	1 1/2" x 1 1/2"
HMN6S-3212-BT3SBP3S	2" x 3/4"
HMN6S-3216-BT3SBP3S	2" x 1"
HMN6S-3220-BT3SBP3S	2" x 1 1/4"
HMN6S-3224-BT3SBP3S	2" x 1 1/2"
HMN6S-3232-BT3SBP3S	2" x 2"

PART NUMBER	BSPT x JIC 316 S/S 3000 lb SEATED HEX MALE NIPPLE
HMN6S-0207-BT3SJC	1/8" x 7/16"
HMN6S-0208-BT3SJC	1/8" x 1/2"
HMN6S-0209-BT3SJC	1/8" x 9/16"
HMN6S-0407-BT3SJC	1/4" x 7/16"
HMN6S-0408-BT3SJC	1/4" x 1/2"
HMN6S-0409-BT3SJC	1/4" x 9/16"
HMN6S-0412-BT3SJC	1/4" x 3/4"
HMN6S-0414-BT3SJC	1/4" x 7/8"
HMN6S-0607-BT3SJC	3/8" x 7/16"
HMN6S-0608-BT3SJC	3/8" x 1/2"
HMN6S-0609-BT3SJC	3/8" x 9/16"
HMN6S-0612-BT3SJC	3/8" x 3/4"
HMN6S-0614-BT3SJC	3/8" x 7/8"
HMN6S-0617-BT3SJC	3/8" x 1 1/16"
HMN6S-0807-BT3SJC	1/2" x 7/16"
HMN6S-0809-BT3SJC	1/2" x 9/16"
HMN6S-0812-BT3SJC	1/2" x 3/4"
HMN6S-0814-BT3SJC	1/2" x 7/8"
HMN6S-0817-BT3SJC	1/2" x 1 1/16"
HMN6S-0821-BT3SJC	1/2" x 1 5/16"
HMN6S-1012-BT3SJC	5/8" x 3/4"
HMN6S-1014-BT3SJC	5/8" x 7/8"
HMN6S-1209-BT3SJC	3/4" x 9/16"
HMN6S-1212-BT3SJC	3/4" x 3/4"
HMN6S-1214-BT3SJC	3/4" x 7/8"
HMN6S-1217-BT3SJC	3/4" x 1 1/16"
HMN6S-1219-BT3SJC	3/4" x 1 3/16"
HMN6S-1221-BT3SJC	3/4" x 1 5/16"
HMN6S-1614-BT3SJC	1" x 7/8"
HMN6S-1617-BT3SJC	1" x 1 1/16"
HMN6S-1619-BT3SJC	1" x 1 3/16"
HMN6S-1621-BT3SJC	1" x 1 5/16"
HMN6S-1626-BT3SJC	1" x 1 5/8"
HMN6S-2017-BT3SJC	1 1/4" x 1 1/16"
HMN6S-2021-BT3SJC	1 1/4" x 1 5/16"
HMN6S-2026-BT3SJC	1 1/4" x 1 5/8"
HMN6S-2421-BT3SJC	1 1/2" x 1 5/16"
HMN6S-2426-BT3SJC	1 1/2" x 1 5/8"
HMN6S-2430-BT3SJC	1 1/2" x 1 7/8"
HMN6S-3240-BT3SJC	2" x 2 1/2"



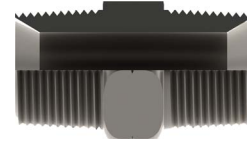
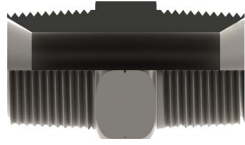
PART NUMBER	NPT SEATED 316 S/S HEX MALE x HYDRAULIC HOSETAIL
AF16SHH-0202-NTS	1/8" x 1/8"
AF16SHH-0203-NTS	1/8" x 3/16"
AF16SHH-0204-NTS	1/8" x 1/4"
AF16SHH-0404-NTS	1/4" x 1/4"
AF16SHH-0406-NTS	1/4" x 3/8"
AF16SHH-0604-NTS	3/8" x 1/4"
AF16SHH-0606-NTS	3/8" x 3/8"
AF16SHH-0608-NTS	3/8" x 1/2"
AF16SHH-0804-NTS	1/2" x 1/4"
AF16SHH-0806-NTS	1/2" x 3/8"
AF16SHH-0808-NTS	1/2" x 1/2"
AF16SHH-0812-NTS	1/2" x 3/4"
AF16SHH-0816-NTS	1/2" x 1"
AF16SHH-1206-NTS	3/4" x 3/8"
AF16SHH-1208-NTS	3/4" x 1/2"
AF16SHH-1212-NTS	3/4" x 3/4"
AF16SHH-1216-NTS	3/4" x 1"
AF16SHH-1608-NTS	1" x 1/2"
AF16SHH-1612-NTS	1" x 3/4"
AF16SHH-1616-NTS	1" x 1"
AF16SHH-1620-NTS	1" x 1 1/4"
AF16SHH-2016-NTS	1 1/4" x 1"
AF16SHH-2020-NTS	1 1/4" x 1 1/4"
AF16SHH-2024-NTS	1 1/4" x 1 1/2"
AF16SHH-2420-NTS	1 1/2" x 1 1/4"
AF16SHH-2424-NTS	1 1/2" x 1 1/2"
AF16SHH-2432-NTS	1 1/2" x 2"
AF16SHH-3220-NTS	2" x 1 1/4"
AF16SHH-3224-NTS	2" x 1 1/2"
AF16SHH-3232-NTS	2" x 2"

PART NUMBER	NPSM CONE SEAT 316 S/S FEMALE SWIVEL x HYDRAULIC HOSETAIL
AF26SHH-0202-NMCS	1/8" x 1/8"
AF26SHH-0203-NMCS	1/8" x 3/16"
AF26SHH-0204-NMCS	1/8" x 1/4"
AF26SHH-0404-NMCS	1/4" x 1/4"
AF26SHH-0406-NMCS	1/4" x 3/8"
AF26SHH-0604-NMCS	3/8" x 1/4"
AF26SHH-0606-NMCS	3/8" x 3/8"
AF26SHH-0608-NMCS	3/8" x 1/2"
AF26SHH-0804-NMCS	1/2" x 1/4"
AF26SHH-0806-NMCS	1/2" x 3/8"
AF26SHH-0808-NMCS	1/2" x 1/2"
AF26SHH-0812-NMCS	1/2" x 3/4"
AF26SHH-0816-NMCS	1/2" x 1"
AF26SHH-1206-NMCS	3/4" x 3/8"
AF26SHH-1208-NMCS	3/4" x 1/2"
AF26SHH-1212-NMCS	3/4" x 3/4"
AF26SHH-1216-NMCS	3/4" x 1"
AF26SHH-1608-NMCS	1" x 1/2"
AF26SHH-1612-NMCS	1" x 3/4"
AF26SHH-1616-NMCS	1" x 1"
AF26SHH-1620-NMCS	1" x 1 1/4"
AF26SHH-2016-NMCS	1 1/4" x 1"
AF26SHH-2020-NMCS	1 1/4" x 1 1/4"
AF26SHH-2024-NMCS	1 1/4" x 1 1/2"
AF26SHH-2420-NMCS	1 1/2" x 1 1/4"
AF26SHH-2424-NMCS	1 1/2" x 1 1/2"
AF26SHH-2432-NMCS	1 1/2" x 2"
AF26SHH-3220-NMCS	2" x 1 1/4"
AF26SHH-3224-NMCS	2" x 1 1/2"
AF26SHH-3232-NMCS	2" x 2"



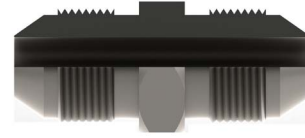
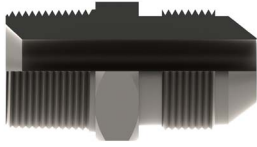
PART NUMBER	NPSM CONE SEAT 316 S/S FEMALE SWIVEL x 90° SWEPT BEND x HYDRAULIC HOSETAIL
AF26S90HH-0202-NMCS	1/8" x 1/8"
AF26S90HH-0203-NMCS	1/8" x 3/16"
AF26S90HH-0204-NMCS	1/8" x 1/4"
AF26S90HH-0404-NMCS	1/4" x 1/4"
AF26S90HH-0406-NMCS	1/4" x 3/8"
AF26S90HH-0604-NMCS	3/8" x 1/4"
AF26S90HH-0606-NMCS	3/8" x 3/8"
AF26S90HH-0608-NMCS	3/8" x 1/2"
AF26S90HH-0804-NMCS	1/2" x 1/4"
AF26S90HH-0806-NMCS	1/2" x 3/8"
AF26S90HH-0808-NMCS	1/2" x 1/2"
AF26S90HH-0812-NMCS	1/2" x 3/4"
AF26S90HH-0816-NMCS	1/2" x 1"
AF26S90HH-1206-NMCS	3/4" x 3/8"
AF26S90HH-1208-NMCS	3/4" x 1/2"
AF26S90HH-1212-NMCS	3/4" x 3/4"
AF26S90HH-1216-NMCS	3/4" x 1"
AF26S90HH-1608-NMCS	1" x 1/2"
AF26S90HH-1612-NMCS	1" x 3/4"
AF26S90HH-1616-NMCS	1" x 1"
AF26S90HH-1620-NMCS	1" x 1 1/4"
AF26S90HH-2016-NMCS	1 1/4" x 1"
AF26S90HH-2020-NMCS	1 1/4" x 1 1/4"
AF26S90HH-2024-NMCS	1 1/4" x 1 1/2"
AF26S90HH-2420-NMCS	1 1/2" x 1 1/4"
AF26S90HH-2424-NMCS	1 1/2" x 1 1/2"
AF26S90HH-2432-NMCS	1 1/2" x 2"
AF26S90HH-3220-NMCS	2" x 1 1/4"
AF26S90HH-3224-NMCS	2" x 1 1/2"
AF26S90HH-3232-NMCS	2" x 2"

PART NUMBER	NPSM CONE SEAT 316 S/S FEMALE SWIVEL x 45° SWEPT BEND x HYDRAULIC HOSETAIL
AF26S45HH-0202-NMCS	1/8" x 1/8"
AF26S45HH-0203-NMCS	1/8" x 3/16"
AF26S45HH-0204-NMCS	1/8" x 1/4"
AF26S45HH-0404-NMCS	1/4" x 1/4"
AF26S45HH-0406-NMCS	1/4" x 3/8"
AF26S45HH-0604-NMCS	3/8" x 1/4"
AF26S45HH-0606-NMCS	3/8" x 3/8"
AF26S45HH-0608-NMCS	3/8" x 1/2"
AF26S45HH-0804-NMCS	1/2" x 1/4"
AF26S45HH-0806-NMCS	1/2" x 3/8"
AF26S45HH-0808-NMCS	1/2" x 1/2"
AF26S45HH-0812-NMCS	1/2" x 3/4"
AF26S45HH-0816-NMCS	1/2" x 1"
AF26S45HH-1206-NMCS	3/4" x 3/8"
AF26S45HH-1208-NMCS	3/4" x 1/2"
AF26S45HH-1212-NMCS	3/4" x 3/4"
AF26S45HH-1216-NMCS	3/4" x 1"
AF26S45HH-1608-NMCS	1" x 1/2"
AF26S45HH-1612-NMCS	1" x 3/4"
AF26S45HH-1616-NMCS	1" x 1"
AF26S45HH-1620-NMCS	1" x 1 1/4"
AF26S45HH-2016-NMCS	1 1/4" x 1"
AF26S45HH-2020-NMCS	1 1/4" x 1 1/4"
AF26S45HH-2024-NMCS	1 1/4" x 1 1/2"
AF26S45HH-2420-NMCS	1 1/2" x 1 1/4"
AF26S45HH-2424-NMCS	1 1/2" x 1 1/2"
AF26S45HH-2432-NMCS	1 1/2" x 2"
AF26S45HH-3220-NMCS	2" x 1 1/4"
AF26S45HH-3224-NMCS	2" x 1 1/2"
AF26S45HH-3232-NMCS	2" x 2"



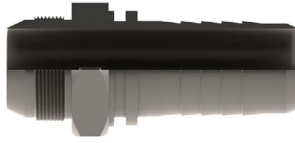
PART NUMBER	NPT 3000 lb 316 S/S SEATED HEX MALE NIPPLE
HMN6S-0202-NT3S	1/8" x 1/8"
HMN6S-0402-NT3S	1/4" x 1/8"
HMN6S-0404-NT3S	1/4" x 1/4"
HMN6S-0602-NT3S	3/8" x 1/8"
HMN6S-0604-NT3S	3/8" x 1/4"
HMN6S-0606-NT3S	3/8" x 3/8"
HMN6S-0804-NT3S	1/2" x 1/4"
HMN6S-0806-NT3S	1/2" x 3/8"
HMN6S-0808-NT3S	1/2" x 1/2"
HMN6S-1010-NT3S	5/8" x 5/8"
HMN6S-1206-NT3S	3/4" x 3/8"
HMN6S-1208-NT3S	3/4" x 1/2"
HMN6S-1212-NT3S	3/4" x 3/4"
HMN6S-1608-NT3S	1" x 1/2"
HMN6S-1612-NT3S	1" x 3/4"
HMN6S-1616-NT3S	1" x 1"
HMN6S-2012-NT3S	1 1/4" x 3/4"
HMN6S-2016-NT3S	1 1/4" x 1"
HMN6S-2020-NT3S	1 1/4" x 1 1/4"
HMN6S-2412-NT3S	1 1/2" x 3/4"
HMN6S-2416-NT3S	1 1/2" x 1"
HMN6S-2420-NT3S	1 1/2" x 1 1/4"
HMN6S-2424-NT3S	1 1/2" x 1 1/2"
HMN6S-3212-NT3S	2" x 3/4"
HMN6S-3216-NT3S	2" x 1"
HMN6S-3220-NT3S	2" x 1 1/4"
HMN6S-3224-NT3S	2" x 1 1/2"
HMN6S-3232-NT3S	2" x 2"
HMN6S-4024-NT3S	2 1/2" x 1 1/2"
HMN6S-4040-NT3S	2 1/2" x 2 1/2"

PART NUMBER	BSPT / NPT 3000 lb 316 S/S SEATED HEX MALE NIPPLE
HMN6S-0202-BT3SNT3S	1/8" x 1/8"
HMN6S-0402-BT3SNT3S	1/4" x 1/8"
HMN6S-0404-BT3SNT3S	1/4" x 1/4"
HMN6S-0602-BT3SNT3S	3/8" x 1/8"
HMN6S-0604-BT3SNT3S	3/8" x 1/4"
HMN6S-0606-BT3SNT3S	3/8" x 3/8"
HMN6S-0804-BT3SNT3S	1/2" x 1/4"
HMN6S-0806-BT3SNT3S	1/2" x 3/8"
HMN6S-0808-BT3SNT3S	1/2" x 1/2"
HMN6S-1010-BT3SNT3S	5/8" x 5/8"
HMN6S-1206-BT3SNT3S	3/4" x 3/8"
HMN6S-1208-BT3SNT3S	3/4" x 1/2"
HMN6S-1212-BT3SNT3S	3/4" x 3/4"
HMN6S-1608-BT3SNT3S	1" x 1/2"
HMN6S-1612-BT3SNT3S	1" x 3/4"
HMN6S-1616-BT3SNT3S	1" x 1"
HMN6S-2012-BT3SNT3S	1 1/4" x 3/4"
HMN6S-2016-BT3SNT3S	1 1/4" x 1"
HMN6S-2020-BT3SNT3S	1 1/4" x 1 1/4"
HMN6S-2412-BT3SNT3S	1 1/2" x 3/4"
HMN6S-2416-BT3SNT3S	1 1/2" x 1"
HMN6S-2420-BT3SNT3S	1 1/2" x 1 1/4"
HMN6S-2424-BT3SNT3S	1 1/2" x 1 1/2"
HMN6S-3212-BT3SNT3S	2" x 3/4"
HMN6S-3216-BT3SNT3S	2" x 1"
HMN6S-3220-BT3SNT3S	2" x 1 1/4"
HMN6S-3224-BT3SNT3S	2" x 1 1/2"
HMN6S-3232-BT3SNT3S	2" x 2"
HMN6S-4024-BT3SNT3S	2 1/2" x 1 1/2"
HMN6S-4040-BT3SNT3S	2 1/2" x 2 1/2"



PART NUMBER	NPT / JIC 3000 lb 316 S/S SEATED HEX MALE NIPPLE
HMN6S-0207-NT3SJC	1/8" x 7/16"
HMN6S-0208-NT3SJC	1/8" x 1/2"
HMN6S-0209-NT3SJC	1/8" x 9/16"
HMN6S-0407-NT3SJC	1/4" x 7/16"
HMN6S-0408-NT3SJC	1/4" x 1/2"
HMN6S-0409-NT3SJC	1/4" x 9/16"
HMN6S-0412-NT3SJC	1/4" x 3/4"
HMN6S-0414-NT3SJC	1/4" x 7/8"
HMN6S-0607-NT3SJC	3/8" x 7/16"
HMN6S-0608-NT3SJC	3/8" x 1/2"
HMN6S-0609-NT3SJC	3/8" x 9/16"
HMN6S-0612-NT3SJC	3/8" x 3/4"
HMN6S-0614-NT3SJC	3/8" x 7/8"
HMN6S-0617-NT3SJC	3/8" x 1 1/16"
HMN6S-0807-NT3SJC	1/2" x 7/16"
HMN6S-0809-NT3SJC	1/2" x 9/16"
HMN6S-0812-NT3SJC	1/2" x 3/4"
HMN6S-0814-NT3SJC	1/2" x 7/8"
HMN6S-0817-NT3SJC	1/2" x 1 1/16"
HMN6S-0821-NT3SJC	1/2" x 1 5/16"
HMN6S-1012-NT3SJC	5/8" x 3/4"
HMN6S-1014-NT3SJC	5/8" x 7/8"
HMN6S-1209-NT3SJC	3/4" x 9/16"
HMN6S-1212-NT3SJC	3/4" x 3/4"
HMN6S-1214-NT3SJC	3/4" x 7/8"
HMN6S-1217-NT3SJC	3/4" x 1 1/16"
HMN6S-1219-NT3SJC	3/4" x 1 3/16"
HMN6S-1221-NT3SJC	3/4" x 1 5/16"
HMN6S-1614-NT3SJC	1" x 7/8"
HMN6S-1617-NT3SJC	1" x 1 1/16"
HMN6S-1619-NT3SJC	1" x 1 3/16"
HMN6S-1621-NT3SJC	1" x 1 5/16"
HMN6S-1626-NT3SJC	1" x 1 5/8"
HMN6S-2017-NT3SJC	1 1/4" x 1 1/16"
HMN6S-2021-NT3SJC	1 1/4" x 1 5/16"
HMN6S-2026-NT3SJC	1 1/4" x 1 5/8"
HMN6S-2421-NT3SJC	1 1/2" x 1 5/16"
HMN6S-2426-NT3SJC	1 1/2" x 1 5/8"
HMN6S-2430-NT3SJC	1 1/2" x 1 7/8"
HMN6S-3240-NT3SJC	2" x 2 1/2"

PART NUMBER	JIC 316 S/S 3000 lb HEX MALE NIPPLE
HMN6S-0707-JC	7/16" x 7/16"
HMN6S-0709-JC	7/16" x 9/16"
HMN6S-0712-JC	7/16" x 3/4"
HMN6S-0714-JC	7/16" x 7/8"
HMN6S-0717-JC	7/16" x 1 1/16"
HMN6S-0808-JC	1/2" x 1/2"
HMN6S-0907-JC	9/16" x 7/16"
HMN6S-0909-JC	9/16" x 9/16"
HMN6S-0912-JC	9/16" x 3/4"
HMN6S-0914-JC	9/16" x 7/8"
HMN6S-0917-JC	9/16" x 1 1/16"
HMN6S-0921-JC	9/16" x 1 5/16"
HMN6S-1209-JC	3/4" x 9/16"
HMN6S-1212-JC	3/4" x 3/4"
HMN6S-1214-JC	3/4" x 7/8"
HMN6S-1217-JC	3/4" x 1 1/16"
HMN6S-1221-JC	3/4" x 1 5/16"
HMN6S-1412-JC	7/8" x 3/4"
HMN6S-1414-JC	7/8" x 7/8"
HMN6S-1417-JC	7/8" x 1 1/16"
HMN6S-1707-JC	1 1/16" x 7/16"
HMN6S-1708-JC	1 1/16" x 1/2"
HMN6S-1709-JC	1 1/16" x 9/16"
HMN6S-1712-JC	1 1/16" x 3/4"
HMN6S-1714-JC	1 1/16" x 7/8"
HMN6S-1717-JC	1 1/16" x 1 1/16"
HMN6S-1721-JC	1 1/16" x 1 5/16"
HMN6S-1919-JC	1 3/16" x 1 3/16"
HMN6S-2112-JC	1 5/16" x 3/4"
HMN6S-2114-JC	1 5/16" x 7/8"
HMN6S-2117-JC	1 5/16" x 1 1/16"
HMN6S-2121-JC	1 5/16" x 1 5/16"
HMN6S-2126-JC	1 5/16" x 1 5/8"
HMN6S-2621-JC	1 5/8" x 1 5/16"
HMN6S-2626-JC	1 5/8" x 1 5/8"
HMN6S-3030-JC	1 7/8" x 1 7/8"
HMN6S-4040-JC	2 1/2" x 2 1/2"



PART NUMBER	JIC 316 S/S HEX MALE x HYDRAULIC HOSETAIL
AF16SHH-0702-JC	7/16" x 1/8"
AF16SHH-0703-JC	7/16" x 3/16"
AF16SHH-0704-JC	7/16" x 1/4"
AF16SHH-0706-JC	7/16" x 3/8"
AF16SHH-0904-JC	9/16" x 1/4"
AF16SHH-0906-JC	9/16" x 3/8"
AF16SHH-0908-JC	9/16" x 1/2"
AF16SHH-1204-JC	3/4" x 1/4"
AF16SHH-1206-JC	3/4" x 3/8"
AF16SHH-1208-JC	3/4" x 1/2"
AF16SHH-1210-JC	3/4" x 5/8"
AF16SHH-1406-JC	7/8" x 3/8"
AF16SHH-1408-JC	7/8" x 1/2"
AF16SHH-1410-JC	7/8" x 5/8"
AF16SHH-1412-JC	7/8" x 3/4"
AF16SHH-1710-JC	1 1/16" x 5/8"
AF16SHH-1712-JC	1 1/16" x 3/4"
AF16SHH-1716-JC	1 1/16" x 1"
AF16SHH-1912-JC	1 3/16" x 3/4"
AF16SHH-1916-JC	1 3/16" x 1"
AF16SHH-2112-JC	1 5/16" x 3/4"
AF16SHH-2116-JC	1 5/16" x 1"
AF16SHH-2120-JC	1 5/16" x 1 1/4"
AF16SHH-2616-JC	1 5/8" x 1"
AF16SHH-2620-JC	1 5/8" x 1 1/4"
AF16SHH-3020-JC	1 7/8" x 1 1/4"
AF16SHH-3024-JC	1 7/8" x 1 1/2"
AF16SHH-3032-JC	1 7/8" x 2"
AF16SHH-4024-JC	2 1/2" x 1 1/2"
AF16SHH-4032-JC	2 1/2" x 2"

PART NUMBER	JIC 316 S/S FEMALE SWIVEL x HYDRAULIC HOSETAIL
AF26SHH-0702-JC	7/16" x 1/8"
AF26SHH-0703-JC	7/16" x 3/16"
AF26SHH-0704-JC	7/16" x 1/4"
AF26SHH-0706-JC	7/16" x 3/8"
AF26SHH-0904-JC	9/16" x 1/4"
AF26SHH-0906-JC	9/16" x 3/8"
AF26SHH-0908-JC	9/16" x 1/2"
AF26SHH-1204-JC	3/4" x 1/4"
AF26SHH-1206-JC	3/4" x 3/8"
AF26SHH-1208-JC	3/4" x 1/2"
AF26SHH-1210-JC	3/4" x 5/8"
AF26SHH-1406-JC	7/8" x 3/8"
AF26SHH-1408-JC	7/8" x 1/2"
AF26SHH-1410-JC	7/8" x 5/8"
AF26SHH-1412-JC	7/8" x 3/4"
AF26SHH-1710-JC	1 1/16" x 5/8"
AF26SHH-1712-JC	1 1/16" x 3/4"
AF26SHH-1716-JC	1 1/16" x 1"
AF26SHH-1912-JC	1 3/16" x 3/4"
AF26SHH-1916-JC	1 3/16" x 1"
AF26SHH-2112-JC	1 5/16" x 3/4"
AF26SHH-2116-JC	1 5/16" x 1"
AF26SHH-2120-JC	1 5/16" x 1 1/4"
AF26SHH-2616-JC	1 5/8" x 1"
AF26SHH-2620-JC	1 5/8" x 1 1/4"
AF26SHH-3020-JC	1 7/8" x 1 1/4"
AF26SHH-3024-JC	1 7/8" x 1 1/2"
AF26SHH-3032-JC	1 7/8" x 2"
AF26SHH-4024-JC	2 1/2" x 1 1/2"
AF26SHH-4032-JC	2 1/2" x 2"



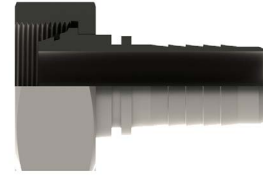
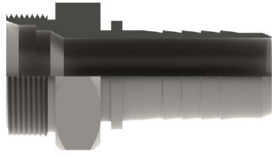
## 6.10

## Hydraulic Fittings



PART NUMBER	JIC 316 S/S FEMALE SWIVEL x 90° SWEPT BEND x HYDRAULIC HOSETAIL
AF26S90HH-0702-JC	7/16" x 1/8"
AF26S90HH-0703-JC	7/16" x 3/16"
AF26S90HH-0704-JC	7/16" x 1/4"
AF26S90HH-0706-JC	7/16" x 3/8"
AF26S90HH-0904-JC	9/16" x 1/4"
AF26S90HH-0906-JC	9/16" x 3/8"
AF26S90HH-0908-JC	9/16" x 1/2"
AF26S90HH-1204-JC	3/4" x 1/4"
AF26S90HH-1206-JC	3/4" x 3/8"
AF26S90HH-1208-JC	3/4" x 1/2"
AF26S90HH-1210-JC	3/4" x 5/8"
AF26S90HH-1406-JC	7/8" x 3/8"
AF26S90HH-1408-JC	7/8" x 1/2"
AF26S90HH-1410-JC	7/8" x 5/8"
AF26S90HH-1412-JC	7/8" x 3/4"
AF26S90HH-1710-JC	1 1/16" x 5/8"
AF26S90HH-1712-JC	1 1/16" x 3/4"
AF26S90HH-1716-JC	1 1/16" x 1"
AF26S90HH-1912-JC	1 3/16" x 3/4"
AF26S90HH-1916-JC	1 3/16" x 1"
AF26S90HH-2112-JC	1 5/16" x 3/4"
AF26S90HH-2116-JC	1 5/16" x 1"
AF26S90HH-2120-JC	1 5/16" x 1 1/4"
AF26S90HH-2616-JC	1 5/8" x 1"
AF26S90HH-2620-JC	1 5/8" x 1 1/4"
AF26S90HH-3020-JC	1 7/8" x 1 1/4"
AF26S90HH-3024-JC	1 7/8" x 1 1/2"
AF26S90HH-3032-JC	1 7/8" x 2"
AF26S90HH-4024-JC	2 1/2" x 1 1/2"
AF26S90HH-4032-JC	2 1/2" x 2"

PART NUMBER	JIC 316 S/S FEMALE SWIVEL x 45° SWEPT BEND x HYDRAULIC HOSETAIL
AF26S45HH-0702-JC	7/16" x 1/8"
AF26S45HH-0703-JC	7/16" x 3/16"
AF26S45HH-0704-JC	7/16" x 1/4"
AF26S45HH-0706-JC	7/16" x 3/8"
AF26S45HH-0904-JC	9/16" x 1/4"
AF26S45HH-0906-JC	9/16" x 3/8"
AF26S45HH-0908-JC	9/16" x 1/2"
AF26S45HH-1204-JC	3/4" x 1/4"
AF26S45HH-1206-JC	3/4" x 3/8"
AF26S45HH-1208-JC	3/4" x 1/2"
AF26S45HH-1210-JC	3/4" x 5/8"
AF26S45HH-1406-JC	7/8" x 3/8"
AF26S45HH-1408-JC	7/8" x 1/2"
AF26S45HH-1410-JC	7/8" x 5/8"
AF26S45HH-1412-JC	7/8" x 3/4"
AF26S45HH-1710-JC	1 1/16" x 5/8"
AF26S45HH-1712-JC	1 1/16" x 3/4"
AF26S45HH-1716-JC	1 1/16" x 1"
AF26S45HH-1912-JC	1 3/16" x 3/4"
AF26S45HH-1916-JC	1 3/16" x 1"
AF26S45HH-2112-JC	1 5/16" x 3/4"
AF26S45HH-2116-JC	1 5/16" x 1"
AF26S45HH-2120-JC	1 5/16" x 1 1/4"
AF26S45HH-2616-JC	1 5/8" x 1"
AF26S45HH-2620-JC	1 5/8" x 1 1/4"
AF26S45HH-3020-JC	1 7/8" x 1 1/4"
AF26S45HH-3024-JC	1 7/8" x 1 1/2"
AF26S45HH-3032-JC	1 7/8" x 2"
AF26S45HH-4024-JC	2 1/2" x 1 1/2"
AF26S45HH-4032-JC	2 1/2" x 2"

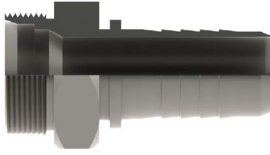


PART NUMBER	METRIC LIGHT DKL MALE 316 S/S x HYDRAULIC HOSETAIL	TUBE SIZE (mm)
AF16SHH-1215-04-DKL	M12 x 1.5 x 1/4"	6 L
AF16SHH-1415-04-DKL	M14 x 1.5 x 1/4"	8 L
AF16SHH-1615-04-DKL	M16 x 1.5 x 1/4"	10 L
AF16SHH-1615-06-DKL	M16 x 1.5 x 3/8"	10 L
AF16SHH-1815-06-DKL	M18 x 1.5 x 3/8"	12 L
AF16SHH-2215-06-DKL	M22 x 1.5 x 3/8"	15 L
AF16SHH-2215-08-DKL	M22 x 1.5 x 1/2"	15 L
AF16SHH-2615-08-DKL	M26 x 1.5 x 1/2"	18 L
AF16SHH-3015-10-DKL	M30 x 1.5 x 5/8"	22 L
AF16SHH-3020-12-DKL	M30 x 2.0 x 3/4"	22 L
AF16SHH-3620-12-DKL	M36 x 2.0 x 3/4"	28 L
AF16SHH-3620-16-DKL	M36 x 2.0 x 1"	28 L
AF16SHH-4520-20-DKL	M45 x 2.0 x 1 1/4"	35 L
AF16SHH-5220-24-DKL	M52 x 2.0 x 1 1/2"	42 L

PART NUMBER	METRIC LIGHT DKL FEMALE 316 S/S x HYDRAULIC HOSETAIL	TUBE SIZE (mm)
AF26SHH-1215-04-DKL	M12 x 1.5 x 1/4"	6 L
AF26SHH-1415-04-DKL	M14 x 1.5 x 1/4"	8 L
AF26SHH-1615-04-DKL	M16 x 1.5 x 1/4"	10 L
AF26SHH-1815-04-DKL	M18 x 1.5 x 1/4"	12 L
AF26SHH-1615-05-DKL	M16 x 1.5 x 5/16"	10 L
AF26SHH-1815-05-DKL	M18 x 1.5 x 5/16"	12 L
AF26SHH-1615-06-DKL	M16 x 1.5 x 3/8"	10 L
AF26SHH-1815-06-DKL	M18 x 1.5 x 3/8"	12 L
AF26SHH-2215-06-DKL	M22 x 1.5 x 3/8"	15 L
AF26SHH-2215-08-DKL	M22 x 1.5 x 1/2"	15 L
AF26SHH-2615-08-DKL	M26 x 1.5 x 1/2"	18 L
AF26SHH-2615-10-DKL	M26 x 1.5 x 5/8"	18 L
AF26SHH-2615-12-DKL	M26 x 1.5 x 3/4"	18 L
AF26SHH-3020-12-DKL	M30 x 2.0 x 3/4"	22 L
AF26SHH-3620-12-DKL	M36 x 2.0 x 3/4"	28 L
AF26SHH-3620-16-DKL	M36 x 2.0 x 1"	28 L
AF26SHH-4520-20-DKL	M45 x 2.0 x 1 1/4"	35 L
AF26SHH-5220-24-DKL	M52 x 2.0 x 1 1/2"	42 L



PART NUMBER	METRIC LIGHT DKL 316 S/S COMPRESSION FITTINGS	TUBE SIZE (mm)
COMHM6S-1215-DKL	M12 x 1.5	6 L
COMHM6S-1415-DKL	M14 x 1.5	8 L
COMHM6S-1615-DKL	M16 x 1.5	10 L
COMHM6S-1815-DKL	M18 x 1.5	12 L
COMHM6S-2215-DKL	M22 x 1.5	15 L
COMHM6S-2615-DKL	M26 x 1.5	18 L
COMHM6S-3615-DKL	M36 x 1.5	28 L



PART NUMBER	METRIC HEAVY DKS MALE 316 S/S x HYDRAULIC HOSETAIL	TUBE SIZE (mm)
AF16SHH-1615-04-DKS	M16 x 1.5 x 1/4"	8 S
AF16SHH-1815-04-DKS	M18 x 1.5 x 1/4"	10 S
AF16SHH-2015-05-DKS	M20 x 1.5 x 5/16"	12 S
AF16SHH-2015-06-DKS	M20 x 1.5 x 3/8"	12 S
AF16SHH-2215-06-DKS	M22 x 1.5 x 3/8"	14 S
AF16SHH-2415-08-DKS	M24 x 1.5 x 1/2"	16 S
AF16SHH-3020-10-DKS	M30 x 2.0 x 5/8"	20 S
AF16SHH-3020-12-DKS	M30 x 2.0 x 3/4"	20 S
AF16SHH-3620-12-DKS	M36 x 2.0 x 3/4"	25 S
AF16SHH-3620-16-DKS	M36 x 2.0 x 1"	30 S
AF16SHH-5220-20-DKS	M52 x 2.0 x 1 1/4"	38 S



PART NUMBER	METRIC HEAVY DKS FEMALE 316 S/S x HYDRAULIC HOSETAIL	TUBE SIZE (mm)
AF26SHH-1615-04-DKS	M16 x 1.5 x 1/4"	8 S
AF26SHH-1815-04-DKS	M18 x 1.5 x 1/4"	10 S
AF26SHH-2015-05-DKS	M20 x 1.5 x 5/16"	12 S
AF26SHH-2015-06-DKS	M20 x 1.5 x 3/8"	12 S
AF26SHH-2215-06-DKS	M22 x 1.5 x 3/8"	14 S
AF26SHH-2415-08-DKS	M24 x 1.5 x 1/2"	16 S
AF26SHH-3020-10-DKS	M30 x 2.0 x 5/8"	20 S
AF26SHH-3020-12-DKS	M36 x 2.0 x 3/4"	25 S
AF26SHH-4220-16-DKS	M42 x 2.0 x 1"	30 S
AF26SHH-5220-20-DKS	M52 x 2.0 x 1 1/4"	38 S



PART NUMBER	METRIC HEAVY DKS 316 S/S COMPRESSION FITTINGS	TUBE SIZE (mm)
COMHM6S-1615-DKS	M16 x 1.5	8 S
COMHM6S-1815-DKS	M18 x 1.5	10 S
COMHM6S-2015-DKS	M20 x 1.5	12 S
COMHM6S-2415-DKS	M24 x 1.5	16 S
COMHM6S-3620-DKS	M36 x 2.0	25 S
COMHM6S-4220-DKS	M42 x 2.0	30 S

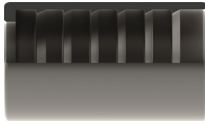


PART NUMBER	STANDPIPE 316 S/S x HYDRAULIC HOSETAIL (IMPERIAL)
AF106SHH-I-0202	1/8" x 1/8"
AF106SHH-I-0203	1/8" x 3/16"
AF106SHH-I-0204	1/8" x 1/4"
AF106SHH-I-0303	3/16" x 3/16"
AF106SHH-I-0304	3/16" x 1/4"
AF106SHH-I-0402	1/4" x 1/8"
AF106SHH-I-0403	1/4" x 3/16"
AF106SHH-I-0404	1/4" x 1/4"
AF106SHH-I-0406	1/4" x 3/8"
AF106SHH-I-0408	1/4" x 1/2"
AF106SHH-I-0604	3/8" x 1/4"
AF106SHH-I-0606	3/8" x 3/8"
AF106SHH-I-0608	3/8" x 1/2"
AF106SHH-I-0806	1/2" x 3/8"
AF106SHH-I-0808	1/2" x 1/2"
AF106SHH-I-0810	1/2" x 5/8"
AF106SHH-I-0812	1/2" x 3/4"
AF106SHH-I-1008	5/8" x 1/2"
AF106SHH-I-1010	5/8" x 5/8"
AF106SHH-I-1012	5/8" x 3/4"
AF106SHH-I-1208	1/2" x 3/4"
AF106SHH-I-1210	3/4" x 5/8"
AF106SHH-I-1212	3/4" x 3/4"
AF106SHH-I-1216	3/4" x 1"
AF106SHH-I-1612	1" x 3/4"
AF106SHH-I-1616	1" x 1"
AF106SHH-I-2020	1 1/4" x 1 1/4"
AF106SHH-I-2424	1 1/2" x 1 1/2"
AF106SHH-I-3232	2" x 2"

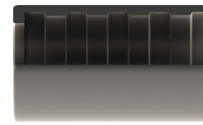
PART NUMBER	STANDPIPE 316 S/S x HYDRAULIC HOSETAIL (METRIC)
AF106SHH-M-0202	3mm x 1/8"
AF106SHH-M-0303	4mm x 3/16"
AF106SHH-M-0404	6mm x 1/4"
AF106SHH-M-0606	10mm x 3/8"
AF106SHH-M-0808	12mm x 1/2"
AF106SHH-M-1010	15mm x 5/8"
AF106SHH-M-1212	20mm x 3/4"
AF106SHH-M-1616	25mm x 1"
AF106SHH-M-2020	32mm x 1 1/4"
AF106SHH-M-2424	38mm x 1 1/2"
AF106SHH-M-3232	50mm x 2"



PART NUMBER	HYDRAULIC 316 S/S LIFESAVER TAIL
LT6SHH-02	1/8"
LT6SHH-03	3/16"
LT6SHH-04	1/4"
LT6SHH-05	5/16"
LT6SHH-06	3/8"
LT6SHH-08	1/2"
LT6SHH-10	5/8"
LT6SHH-12	3/4"
LT6SHH-16	1"
LT6SHH-20	1 1/4"
LT6SHH-24	1 1/2"
LT6SHH-32	2"
LT6SHH-40	2 1/2"
LT6SHH-48	3"
LT6SHH-64	4"



PART NUMBER	1 & 2 WIRE NON SKIVE S/S FERRULE
R1/26S-03	3/16"
R1/26S-04	1/4"
R1/26S-05	5/16"
R1/26S-06	3/8"
R1/26S-08	1/2"
R1/26S-10	5/8"
R1/26S-12	3/4"
R1/26S-16	1"
R1/26S-20	1 1/4"
R1/26S-24	1 1/2"
R1/26S-32	2"



PART NUMBER	R7 & R8 316 S/S FERRULE
R7/86S-02	1/8"
R7/86S-03	3/16"
R7/86S-04	1/4"
R7/86S-05	5/16"
R7/86S-06	3/8"
R7/86S-08	1/2"
R7/86S-10	5/8"
R7/86S-12	3/4"
R7/86S-16	1"