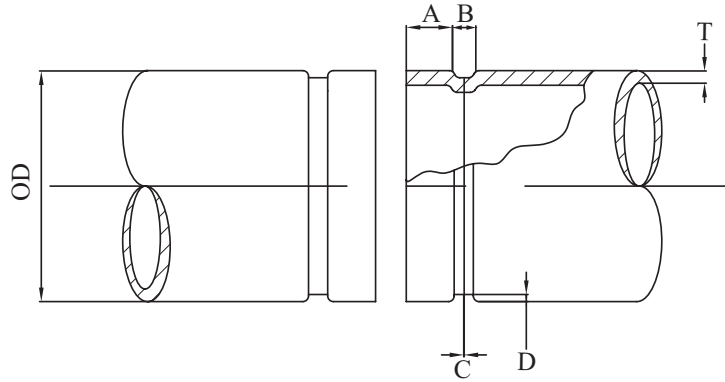


Specifications

Grooved piping system is reliable and faster to install than welding, threading or flanging. This results in the lowest possible installed cost. It can be adapted to suit standard pipe with cut grooves or standard and light wall pipe with rolled grooves.



Standard Roll Groove Specifications												
Nominal Pipe Size	Pipe Outside Diameter (mm) 'OD'			Gasket seat $\pm 0.30 \pm .770$ (mm) 'A'	Groove width $\pm 0.30 \pm .770$ (mm) 'B'	Groove Diameter 'C'		Groove Depth	STD C/S Min allow wall thickness (mm) 'T'	Sch 10s S/S Min allow wall thickness (mm) 'T'	Sch 40s S/S Min allow wall thickness (mm) 'T'	Max Flare Diameter (mm)
	Actual	Tolerance (+)	Tolerance (-)			mm	mm					
1"	33.70	+0.381	-0.381	15.875	7.137	30.226	-0.381	1.600	3.38	2.77	3.38	34.5
1 1/4"	42.40	+0.381	-0.381	15.875	7.137	38.989	-0.381	1.600	3.56	2.77	3.56	43.3
1 1/2"	48.30	+0.381	-0.381	15.875	7.137	45.085	-0.381	1.600	3.65	2.77	3.68	49.4
2"	60.30	+0.610	-0.610	15.875	8.738	57.150	-0.381	1.600	3.91	2.77	3.91	62.2
*2 1/2"	73.00	+0.737	-0.737	15.875	8.738	69.088	-0.457	1.981	5.16	3.05	5.16	75.2
2 1/2"	76.10	+0.737	-0.737	15.875	8.738	69.088	-0.457	1.981	5.16	3.05	5.16	75.2
3"	88.90	+0.889	-0.737	15.875	8.738	84.938	-0.457	1.981	5.49	3.05	5.49	90.3
4"	114.30	+1.143	-0.737	15.875	8.738	110.084	-0.508	2.108	6.02	3.05	6.02	116.2
5"	141.30	+1.422	-0.737	15.875	8.738	137.033	-0.559	2.134	6.55	3.40	6.55	143.5
6"	165.10	+1.600	-0.737	15.875	8.738	163.957	-0.559	2.159	7.11	3.40	7.11	170.7
*6"	168.30	+1.600	-0.737	15.875	8.738	163.957	-0.559	2.159	7.11	3.40	7.11	170.7
8"	219.10	+1.600	-0.737	19.050	11.913	214.401	-0.635	2.337	8.18	3.76	8.18	221.5
10"	273.00	+1.600	-0.737	19.050	11.913	268.28	-0.687	2.387	9.27	4.19	9.27	277.4
12"	323.90	+1.600	-0.737	19.050	11.913	318.29	-0.758	2.697	10.31	4.57	9.53	328.2

* USA pipe size

Specifications		
PRODUCT	WORKING PRESSURE	MAX WORKING TEMP
RIGID COUPLING	2500 kPa	100°C
90° ELBOW		
45° ELBOW		
EQUAL TEE		
REDUCING TEE		
CONCENTRIC REDUCER		
CAP		
MECHANICAL TEE	1600 kPa	

*Refer to Fittings, Flanges & Couplings Section for part numbers - Page 216