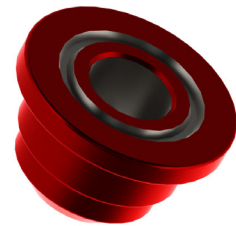
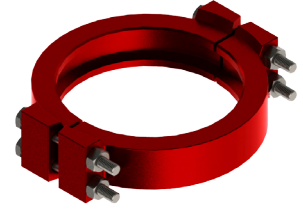


The complete range of Clamps & Hubs in accordance to API 16A.

- Clamps allow fast and easy make up even in limited space. All clamps have 360° infinite adjust ability
- Clamps reliably to connect hubs and other API connections
- Hubs & clamps up to pressure range from 2,000 PSI to 20,000 PSI
- Hubs & clamps are designed & manufactured in accordance with below specific requirements:
 - Products specification level - 1,2,3
 - Temperature rating - K to Y
 - Min. yield - 60,000 PSI up to 10,000 PSI & 75,000 PSI up to 20,000 PSI
 - Min. tensile - 85,000 PSI up to 10,000 PSI & 95,000 PSI up to 20,000 PSI
 - Material class - API - 60 K up to 15,000 PSI & 75 K up to 20,000 PSI
- Type 16B & 16BX hubs are of the ring joint type and are designed for face to face make-up



API Type 16B Intergral Hub Connections for 2000 PSI & 3000 PSI Rated Working Pressure						
Nominal Size and Bore B (Inches)	Outside Diameter D (mm)	Total Thickness C (mm)	Large Diameter of Neck A (mm)	Neck Length for Clamp Clearance L (mm)	Ring Gasket Nuber	Clamp Number
2000 PSI						
7 1/16"	263.52	36.65	225.42	63.50	RX-45	25
16 3/4"	517.52	32.23	482.60	79.50	RX-65	12
21 1/14"	669.92	47.54	622.30	127	RX-73	18
3000 PSI						
11"	396.90	35.53	355.60	79.50	RX-53	9
13 5/8"	466.75	33.93	425.45	81.02	RX-57	11
16 3/4"	539.75	37.05	498.47	93.47	RX-65	14

API Type 16X Intergral Hub Connections for 5000 PSI Rated Working Pressure						
Nominal Size and Bore B (Inches)	Outside Diameter D (mm)	Total Thickness C (mm)	Large Diameter of Neck A (mm)	Neck Length for Clamp Clearance L (mm)	Ring Gasket Nuber	Clamp Number
5000 PSI						
2 1/6"	127.78	29.61	92.86	56.38	BX 152	1
2 9/16"	146.83	29.61	111.91	57.65	BX 153	2
3 1/8"	160.32	29.61	125.42	59.94	BX 154	4
4 1/16"	193.67	30.40	158.75	60.45	BX 155	5
7 1/16"	336.55	41.19	295.27	85.85	BX 156	8
9"	336.55	41.19	295.27	85.85	BX 157	8
11"	412.75	42.01	371.47	104.90	BX 158	10
13 5/8"	523.87	47.52	482.60	123.95	BX 160	13
16 3/4"	650.87	45.16	609.60	139.70	BX 162	19
21 1/4"	793.75	92.20	708.02	171.45	BX 165	27



API PRODUCTS

8.16

Clamps & Hubs

API Type 16BX Integral Hub Connections for 10,000 PSI Rated Working Pressure						
Nominal Size and Bore B (Inches)	Outside Diameter D (mm)	Total Thickness C (mm)	Large Diameter of Neck A (mm)	Neck Length for Clamp Clearance L (mm)	Ring Gasket Nuber	Clamp Number
10,000 PSI						
1 13/16"	127.78	29.61	92.86	56.38	BX 151	1
2 1/16"	146.83	29.61	111.91	57.65	BX 152	2
2 9/16"	160.32	29.61	125.42	59.94	BX 153	4
3 1/16"	193.67	30.40	158.75	60.45	BX 154	5
4 1/16"	214.29	33.27	173.02	71.62	BX 155	6
7 1/16"	412.75	41.98	371.47	104.90	BX 156	10
9"	412.75	41.98	371.47	104.90	BX 157	10
11"	524.51	51.68	473.07	120.65	BX 158	22
13 5/8"	565.15	58.64	523.87	134.87	BX 159	15
16 3/4"	711.20	76.32	635	156.71	BX 162	28
18 3/4"	793.75	92.20	708.02	171.45	BX 164	27
21 1/4"	863.60	101.72	774.70	208.78	BX 166	26

API Type 16BX Integral Hub Connections for 15,000 PSI Rated Working Pressure						
Nominal Size and Bore B (Inches)	Outside Diameter D (mm)	Total Thickness C (mm)	Large Diameter of Neck A (mm)	Neck Length for Clamp Clearance L (mm)	Ring Gasket Nuber	Clamp Number
15,000 PSI						
1 13/16"	146.83	29.61	111.91	57.65	BX 151	2
2 1/16"	155.57	29.61	114.30	81.78	BX 152	3
2 9/16"	155.57	29.61	114.30	81.78	BX 153	3
3 1/16"	216.83	33.27	173.02	71.62	BX 154	6
4 1/16"	336.55	41.19	295.27	85.85	BX 155	8
7 1/16"	523.90	51.68	473.07	120.65	BX 156	22
11"	565.15	58.64	523.87	137.87	BX 158	15
13 5/8"	711.20	76.32	635	156.71	BX 159	28
18 3/4"	863.60	101.72	774.7	208.78	BX 164	26

API Type 16BX Integral Hub Connections for 15,000 PSI Rated Working Pressure						
Nominal Size and Bore B (Inches)	Outside Diameter D (mm)	Total Thickness C (mm)	Large Diameter of Neck A (mm)	Neck Length for Clamp Clearance L (mm)	Ring Gasket Nuber	Clamp Number
15,000 PSI						
1 13/16"	155.57	41.19	114.30	81.78	BX 151	3
2 1/16"	155.57	41.19	114.30	81.78	BX 152	3
2 9/16"	214.29	33.27	173.02	71.62	BX 153	6
3 1/16"	336.55	41.19	295.27	85.85	BX 154	8
4 1/16"	412.75	41.98	371.47	104.90	BX 155	10
7 1/16"	565.15	58.64	523.87	134.87	BX 156	25
11"	711.12	76.32	635	156.71	BX 158	28

10
9
8
7
6
5
4
3
2
1

API PRODUCTS