

Composite Hose - ECTFE

Part No.: CH-ECTFE

Colour: Blue / White Stripe

Inner Wire: 316 Stainless Steel

Lining: ECTFE

Cover: PVC Coated Polyester Cloth

Reinforcement: Polyester Fabrics

Outer Wire: 316 Stainless Steel

Size Available: 4" - 10"

Temperature: -30°C +80°C

Type: 2/3

Grade: 2

Electrical kind: B - Discontinuous

Low | Med | High

Flexibility

Cycle Life

Pressure Rating

Chemical Resistance

Wall Thickness

Construction

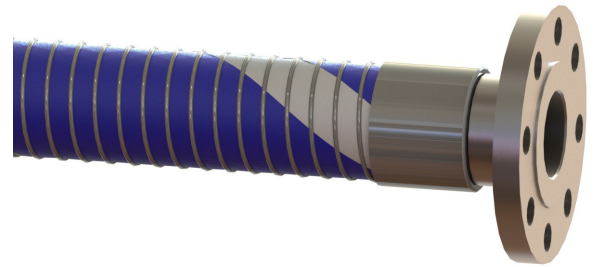
Use:

Designed for suction and discharge of the most aggressive chemicals and searching solvents and is generally used where the chemical resistance of polypropylene is inadequate.

This hose is extremely robust and is used predominantly for ship to shore/ship to ship operations, and for the most demanding of plant duties. It can be used for the transfer of certain liquid food products.

Applicable Standards

BSEN13765:2010



Specifications

Part Number	Nominal Dia.			Max. Working Pressure		Max. Burst Pressure		Min. Bend Radius	Weight Per Mtr
	Inches	I.D (mm)	O.D (mm)	kPa	psi	kPa	psi	mm	kg.
CH-ECTFE-100	4"	100	1400	200	7000	1000	400	6.4	0.9
CH-ECTFE-150	6"	150	1400	200	7000	1000	510	10.7	0.9
CH-ECTFE-200	8"	200	1400	200	7000	1000	760	15.0	0.9
CH-ECTFE-250	10"	250	1050	150	5250	750	915	20.5	0.9

Safety Factor: 5:1 Standard Duty. (Burst Pressure: Working Pressure)

Applications

