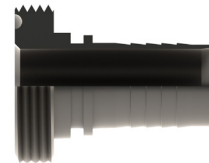
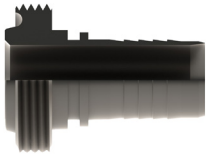


PART NUMBER	BSM 316 S/S STANDARD LINER x HEX NUT x PTFE HOSETAIL
FBSM6SPH-16	1"
FBSM6SPH-24	1 1/2"
FBSM6SPH-32	2"
FBSM6SPH-40	2 1/2"
FBSM6SPH-48	3"
FBSM6SPH-64	4"

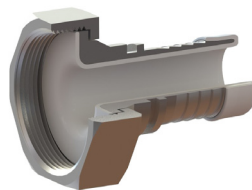
PART NUMBER	BSM 316 S/S FLAT FACE LINER (CIP) x HEX NUT x PTFE HOSETAIL
FBSMFF6SPH-16	1"
FBSMFF6SPH-24	1 1/2"
FBSMFF6SPH-32	2"
FBSMFF6SPH-40	2 1/2"
FBSMFF6SPH-48	3"
FBSMFF6SPH-64	4"



PART NUMBER	BSM 316 S/S STANDARD MALE x PTFE HOSETAIL
MBSM6SPH-16	1"
MBSM6SPH-24	1 1/2"
MBSM6SPH-32	2"
MBSM6SPH-40	2 1/2"
MBSM6SPH-48	3"
MBSM6SPH-64	4"

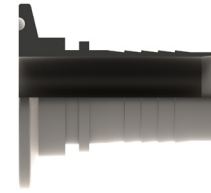
PART NUMBER	BSM 316 S/S FLAT FACE MALE (CIP) x PTFE HOSETAIL
MBSMFF6SPH-16	1"
MBSMFF6SPH-24	1 1/2"
MBSMFF6SPH-32	2"
MBSMFF6SPH-40	2 1/2"
MBSMFF6SPH-48	3"
MBSMFF6SPH-64	4"

Specialised Encapsulated Fittings
Available on request.



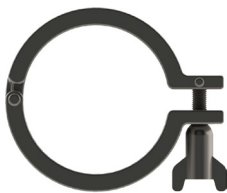


PART NUMBER	TRICLOVER 316 S/S FERRULE (STANDARD)
TRI6S-08	1/2"
TRI6S-12	3/4"
TRI6S-16	1"
TRI6S-20	1 1/4"
TRI6S-24	1 1/2"
TRI6S-32	2"
TRI6S-40	2 1/2"
TRI6S-48	3"
TRI6S-64	4"
TRI6S-96	6"



PART NUMBER	TRICLOVER 316 S/S FERRULE x HYGIENIC HOSETAIL
TRI6SFH-08	1/2"
TRI6SFH-12	3/4"
TRI6SFH-16	1"
TRI6SFH-20	1 1/4"
TRI6SFH-24	1 1/2"
TRI6SFH-32	2"
TRI6SFH-40	2 1/2"
TRI6SFH-48	3"
TRI6SFH-64	4"
TRI6SFH-96	6"

*Refer to Technical Data Section for Specifications - Page 353

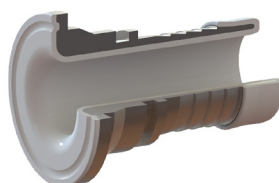


PART NUMBER	TRICLOVER S/S 304 CLAMP
CLAMP4S-TRI-08	1/2"
CLAMP4S-TRI-12	3/4"
CLAMP4S-TRI-16	1"
CLAMP4S-TRI-20	1 1/4"
CLAMP4S-TRI-24	1 1/2"
CLAMP4S-TRI-32	2"
CLAMP4S-TRI-40	2 1/2"
CLAMP4S-TRI-48	3"
CLAMP4S-TRI-64	4"
CLAMP4S-TRI-96	6"



PART NUMBER	PTFE TRICLOVER SEAL
OR-T-TRI-08	1/2"
OR-T-TRI-12	3/4"
OR-T-TRI-16	1"
OR-T-TRI-20	1 1/4"
OR-T-TRI-24	1 1/2"
OR-T-TRI-32	2"
OR-T-TRI-40	2 1/2"
OR-T-TRI-48	3"
OR-T-TRI-64	4"
OR-T-TRI-96	6"

Specialised Encapsulated Fittings Available on request.





PART NUMBER	BSM 316 S/S STANDARD LINER
LS6S-16-BM	1"
LS6S-24-BM	1 1/2"
LS6S-32-BM	2"
LS6S-40-BM	2 1/2"
LS6S-48-BM	3"
LS6S-64-BM	4"
LS6S-96-BM	6"
LS6S-128-BM	8"

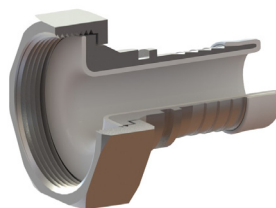
PART NUMBER	BSM 316 S/S FLAT FACE LINER (CIP)
LFF6S-16-BM	1"
LFF6S-24-BM	1 1/2"
LFF6S-32-BM	2"
LFF6S-40-BM	2 1/2"
LFF6S-48-BM	3"
LFF6S-64-BM	4"
LFF6S-96-BM	6"
LFF6S-128-BM	8"



PART NUMBER	BSM 316 S/S STANDARD MALE
MS6S-16-BM	1"
MS6S-24-BM	1 1/2"
MS6S-32-BM	2"
MS6S-40-BM	2 1/2"
MS6S-48-BM	3"
MS6S-64-BM	4"
MS6S-96-BM	6"
MS6S-128-BM	8"

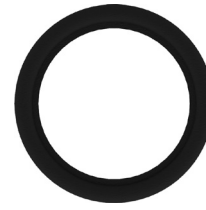
PART NUMBER	BSM 316 S/S FLAT FACE MALE (CIP)
MFF6S-16-BM	1"
MFF6S-24-BM	1 1/2"
MFF6S-32-BM	2"
MFF6S-40-BM	2 1/2"
MFF6S-48-BM	3"
MFF6S-64-BM	4"
MFF6S-96-BM	6"
MFF6S-128-BM	8"

Specialised Encapsulated Fittings Available on request.

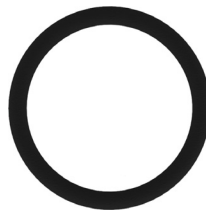




PART NUMBER	BSM 304 S/S HEX NUT
HN4S-16-BM	1"
HN4S-24-BM	1 1/2"
HN4S-32-BM	2"
HN4S-40-BM	2 1/2"
HN4S-48-BM	3"
HN4S-64-BM	4"
HN4S-96-BM	6"
HN4S-128-BM	8"

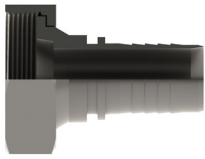


PART NUMBER	EPDM BSM 'O' RING SEAL FLAT FACE SEAL (CIP)
BSM-EPDM-FF-16	1"
BSM-EPDM-FF-24	1 1/2"
BSM-EPDM-FF-32	2"
BSM-EPDM-FF-40	2 1/2"
BSM-EPDM-FF-48	3"
BSM-EPDM-FF-64	4"
BSM-EPDM-FF-96	6"
BSM-EPDM-FF-128	8"



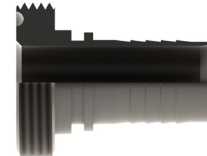
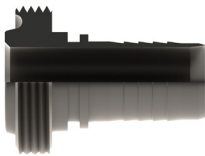
PART NUMBER	EPDM BSM 'O' RING SEAL STANDARD SEAL
BSM-EPDM-16	1"
BSM-EPDM-24	1 1/2"
BSM-EPDM-32	2"
BSM-EPDM-40	2 1/2"
BSM-EPDM-48	3"
BSM-EPDM-64	4"
BSM-EPDM-96	6"
BSM-EPDM-128	8"

Hygienic Fittings



PART NUMBER	BSM 316 S/S STANDARD LINER x HEX NUT x HYGIENIC HOSETAIL
FBSM6SFH-16	1"
FBSM6SFH-24	1 1/2"
FBSM6SFH-32	2"
FBSM6SFH-40	2 1/2"
FBSM6SFH-48	3"
FBSM6SFH-64	4"
FBSM6SFH-96	6"
FBSM6SFH-128	8"

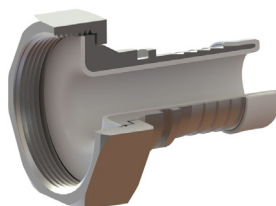
PART NUMBER	BSM 316 S/S FLAT FACE LINER (CIP) x HEX NUT x HYGIENIC HOSETAIL
FBSMFF6SFH-16	1"
FBSMFF6SFH-24	1 1/2"
FBSMFF6SFH-32	2"
FBSMFF6SFH-40	2 1/2"
FBSMFF6SFH-48	3"
FBSMFF6SFH-64	4"
FBSMFF6SFH-96	6"
FBSMFF6SFH-128	8"

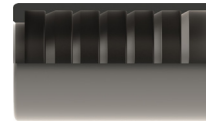
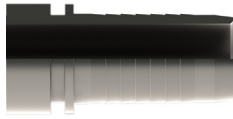


PART NUMBER	BSM 316 S/S STANDARD MALE x HYGIENIC HOSETAIL
MBSM6SFH-16	1"
MBSM6SFH-24	1 1/2"
MBSM6SFH-32	2"
MBSM6SFH-40	2 1/2"
MBSM6SFH-48	3"
MBSM6SFH-64	4"
MBSM6SFH-96	6"
MBSM6SFH-128	8"

PART NUMBER	BSM 316 S/S FLAT FACE MALE (CIP) x HYGIENIC HOSETAIL
MBSMFF6SFH-16	1"
MBSMFF6SFH-24	1 1/2"
MBSMFF6SFH-32	2"
MBSMFF6SFH-40	2 1/2"
MBSMFF6SFH-48	3"
MBSMFF6SFH-64	4"
MBSMFF6SFH-96	6"
MBSMFF6SFH-128	8"

**Specialised Encapsulated Fittings
Available on request.**





PART NUMBER	HYGIENIC 316 S/S LIFESAVER TAIL
LT6SFH-12	3/4"
LT6SFH-16	1"
LT6SFH-20	1 1/4"
LT6SFH-24	1 1/2"
LT6SFH-32	2"
LT6SFH-40	2 1/2"
LT6SFH-48	3"
LT6SFH-64	4"
LT6SFH-80	5"
LT6SFH-96	6"

PART NUMBER	HYGIENIC 316 S/S FERRULE
FF6S-08	1/2"
FF6S-10	5/8"
FF6S-12	3/4"
FF6S-16	1"
FF6S-20	1 1/4"
FF6S-24	1 1/2"
FF6S-32	2"
FF6S-40	2 1/2"
FF6S-48	3"
FF6S-64	4"
FF6S-80	5"
FF6S-96	6"