

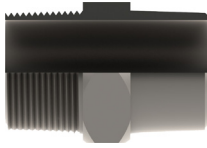
PART NUMBER	BSPT 150lb 316 S/S HEX MALE WELD ON
AF16SW-02-BT	1/8"
AF16SW-04-BT	1/4"
AF16SW-06-BT	3/8"
AF16SW-08-BT	1/2"
AF16SW-10-BT	5/8"
AF16SW-12-BT	3/4"
AF16SW-16-BT	1"
AF16SW-20-BT	1 1/4"
AF16SW-24-BT	1 1/2"
AF16SW-32-BT	2"
AF16SW-40-BT	2 1/2"
AF16SW-48-BT	3"
AF16SW-64-BT	4"

PART NUMBER	BSPP CONE SEAT 316 S/S FEMALE SWIVEL WELD ON
AF26SW-02-BPCS	1/8"
AF26SW-04-BPCS	1/4"
AF26SW-06-BPCS	3/8"
AF26SW-08-BPCS	1/2"
AF26SW-10-BPCS	5/8"
AF26SW-12-BPCS	3/4"
AF26SW-16-BPCS	1"
AF26SW-20-BPCS	1 1/4"
AF26SW-24-BPCS	1 1/2"
AF26SW-32-BPCS	2"
AF26SW-40-BPCS	2 1/2"
AF26SW-48-BPCS	3"
AF26SW-64-BPCS	4"

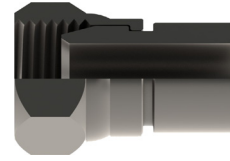


PART NUMBER	BSPP 150 lb 316 S/S 3 PIECE FEMALE/FEMALE BARREL UNION
AF126S-02-BP1	1/8"
AF126S-04-BP1	1/4"
AF126S-06-BP1	3/8"
AF126S-08-BP1	1/2"
AF126S-12-BP1	3/4"
AF126S-16-BP1	1"
AF126S-20-BP1	1 1/4"
AF126S-24-BP1	1 1/2"
AF126S-32-BP1	2"
AF126S-40-BP1	2 1/2"
AF126S-48-BP1	3"
AF126S-64-BP1	4"

PART NUMBER	BSPP X BSPT 150 lb 316 S/S 3 PIECE FEMALE/MALE BARREL UNION
AF116S-04-BP1	1/4"
AF116S-06-BP1	3/8"
AF116S-08-BP1	1/2"
AF116S-12-BP1	3/4"
AF116S-16-BP1	1"
AF116S-20-BP1	1 1/4"
AF116S-24-BP1	1 1/2"
AF116S-32-BP1	2"
AF116S-40-BP1	2 1/2"
AF116S-48-BP1	3"
AF116S-64-BP1	4"



PART NUMBER	NPT 316 S/S 150lb HEX MALE WELD ON
AF16SW-02-NT1	1/8"
AF16SW-04-NT1	1/4"
AF16SW-06-NT1	3/8"
AF16SW-08-NT1	1/2"
AF16SW-10-NT1	5/8"
AF16SW-12-NT1	3/4"
AF16SW-16-NT1	1"
AF16SW-20-NT1	1 1/4"
AF16SW-24-NT1	1 1/2"
AF16SW-32-NT1	2"
AF16SW-40-NT1	2 1/2"
AF16SW-48-NT1	3"
AF16SW-64-NT1	4"



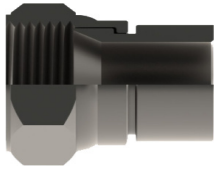
PART NUMBER	NPSM CONE SEAT 316 S/S FEMALE SWIVEL WELD ON
AF26SW-02-NMCS	1/8"
AF26SW-04-NMCS	1/4"
AF26SW-06-NMCS	3/8"
AF26SW-08-NMCS	1/2"
AF26SW-10-NMCS	5/8"
AF26SW-12-NMCS	3/4"
AF26SW-16-NMCS	1"
AF26SW-20-NMCS	1 1/4"
AF26SW-24-NMCS	1 1/2"
AF26SW-32-NMCS	2"



PART NUMBER	NPT 150 lb 316 S/S 3 PIECE FEMALE/FEMALE BARREL UNION
AF126S-02-NT1	1/8"
AF126S-04-NT1	1/4"
AF126S-06-NT1	3/8"
AF126S-08-NT1	1/2"
AF126S-12-NT1	3/4"
AF126S-16-NT1	1"
AF126S-20-NT1	1 1/4"
AF126S-24-NT1	1 1/2"
AF126S-32-NT1	2"
AF126S-40-NT1	2 1/2"
AF126S-48-NT1	3"
AF126S-64-NT1	4"



PART NUMBER	NPT X NPT 150 lb 316 S/S 3 PIECE FEMALE/MALE BARREL UNION
AF116S-04-NT1	1/4"
AF116S-06-NT1	3/8"
AF116S-08-NT1	1/2"
AF116S-12-NT1	3/4"
AF116S-16-NT1	1"
AF116S-20-NT1	1 1/4"
AF116S-24-NT1	1 1/2"
AF116S-32-NT1	2"
AF116S-40-NT1	2 1/2"
AF116S-48-NT1	3"
AF116S-64-NT1	4"



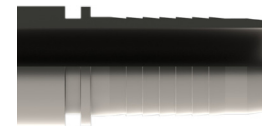
PART NUMBER	JIC 316 S/S FEMALE SWIVEL WELD ON
AF26SW-07-JC	7/16"
AF26SW-09-JC	9/16"
AF26SW-12-JC	3/4"
AF26SW-14-JC	7/8"
AF26SW-17-JC	1 1/16"
AF26SW-21-JC	1 5/16"
AF26SW-26-JC	1 5/8"
AF26SW-30-JC	1 7/8"
AF26SW-40-JC	2 1/2"



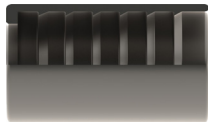
PART NUMBER	316 S/S SHD 10 STUB END
ST6SP-12-S10	1/2"
ST6SP-20-S10	3/4"
ST6SP-25-S10	1"
ST6SP-32-S10	1 1/4"
ST6SP-40-S10	1 1/2"
ST6SP-50-S10	2"
ST6SP-65-S10	2 1/2"
ST6SP-80-S10	3"
ST6SP-100-S10	4"
ST6SP-150-S10	6"
ST6SP-200-S10	8"



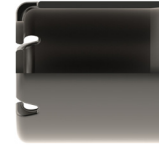
PART NUMBER	316 S/S SHD 40 STUB END
ST6SP-12-S40	1/2"
ST6SP-20-S40	3/4"
ST6SP-25-S40	1"
ST6SP-32-S40	1 1/4"
ST6SP-40-S40	1 1/2"
ST6SP-50-S40	2"
ST6SP-65-S40	2 1/2"
ST6SP-80-S40	3"
ST6SP-100-S40	4"
ST6SP-150-S40	6"
ST6SP-200-S40	8"



PART NUMBER	INDUSTRIAL 316 S/S LIFESAVER TAIL (6000 kPa)
LT6SIH60-12	3/4"
LT6SIH60-16	1"
LT6SIH60-20	1 1/4"
LT6SIH60-24	1 1/2"
LT6SIH60-32	2"
LT6SIH60-40	2 1/2"
LT6SIH60-48	3"
LT6SIH60-64	4"
LT6SIH60-80	5"
LT6SIH60-96	6"
LT6SIH60-128	8"
LT6SIH60-160	10"
LT6SIH60-192	12"



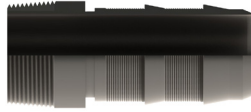
PART NUMBER	INDUSTRIAL 316 S/S FERRULE (6000 kPa)
IF6S60-12	3/4"
IF6S60-16	1"
IF6S60-20	1 1/4"
IF6S60-24	1 1/2"
IF6S60-32	2"
IF6S60-40	2 1/2"
IF6S60-48	3"
IF6S60-64	4"



PART NUMBER	INDUSTRIAL 304 S/S SLOTTED FERRULE (2000 kPa)	
	HOSE SIZE	FERRULE I.D. (mm)
IF4S20-31.8-12	3/4"	31.8
IF4S20-33.3-12	3/4"	33.3
IF4S20-34.9-12	3/4"	34.9
IF4S20-36.5-16	1"	36.5
IF4S20-38.1-16	1"	38.1
IF4S20-39.7-16	1"	39.7
IF4S20-44.5-20	1 1/4"	44.5
IF4S20-46-20	1 1/4"	46
IF4S20-46-24	1 1/2"	46
IF4S20-49.2-24	1 1/2"	49.2
IF4S20-50.8-24	1 1/2"	50.8
IF4S20-52.4-24	1 1/2"	52.4
IF4S20-63.5-32	2"	63.5
IF4S20-65.1-32	2"	65.1
IF4S20-66.7-32	2"	66.7
IF4S20-68.3-32	2"	68.3
IF4S20-76.2-40	2 1/2"	76.2
IF4S20-79.4-40	2 1/2"	79.4
IF4S20-90.5-48	3"	90.5
IF4S20-92.1-48	3"	92.1
IF4S20-93.7-48	3"	93.7
IF4S20-115.9-64	4"	115.9
IF4S20-119.1-64	4"	119.1
IF4S20-122.2-64	4"	122.2
IF4S20-168.3-96	6"	168.3
IF4S20-171.5-96	6"	171.5

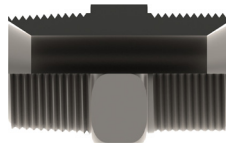


PART NUMBER	INDUSTRIAL 316 S/S LIFESAVER TAIL (2000 kPa)
LT6SIH20-16	1"
LT6SIH20-20	1 1/4"
LT6SIH20-24	1 1/2"
LT6SIH20-32	2"
LT6SIH20-40	2 1/2"
LT6SIH20-48	3"
LT6SIH20-64	4"
LT6SIH20-80	5"
LT6SIH20-96	6"
LT6SIH20-128	8"
LT6SIH20-160	10"
LT6SIH20-192	12"

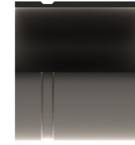
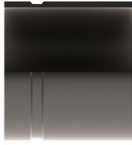


PART NUMBER	BSPT 316 S/S MALE x INDUSTRIAL HOSETAIL
AF56SIH20-1616-BT	1" x 1"
AF56SIH20-2020-BT	1 1/4" x 1 1/4"
AF56SIH20-2424-BT	1 1/2" x 1 1/2"
AF56SIH20-3232-BT	2" x 2"
AF56SIH20-4040-BT	2 1/2" x 2 1/2"
AF56SIH20-4848-BT	3"
AF56SIH20-9696-BT	4"

PART NUMBER	BSPP CONE SEAT 316 S/S FEMALE SWIVEL x INDUSTRIAL HOSETAIL
AF26SIH20-1616-BPCS	1" x 1"
AF26SIH20-2020-BPCS	1 1/4" x 1 1/4"
AF26SIH20-2424-BPCS	1 1/2" x 1 1/2"
AF26SIH20-3232-BPCS	2" x 2"
AF26SIH20-4040-BPCS	2 1/2" x 2 1/2"
AF26SIH20-4848-BPCS	3"
AF26SIH20-9696-BPCS	4"



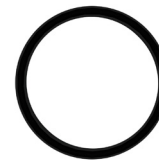
PART NUMBER	BSPT/P 150lb 316 S/S SEATED HEX MALE NIPPLE
HMN6S-2020-BT1SBP1S	1 1/4" x 1 1/4"
HMN6S-2424-BT1SBP1S	1 1/2" x 1 1/2"
HMN6S-3232-BT1SBP1S	2" x 2"



PART NUMBER	ROLLED GROOVE CARBON STEEL STD SPIGOT		
	SIZE	WALL THICKNESS (mm)	O.D. (mm)
RGMSW-25	1"	3.38	33.7
RGMSW-32	1 1/4"	3.56	42.4
RGMSW-40	1 1/2"	3.65	48.3
RGMSW-50	2"	3.91	60.3
RGMSW-65-US	2 1/2"	5.16	73.0
RGMSW-65	2 1/2"	5.16	76.1
RGMSW-80	3"	5.49	88.9
RGMSW-100	4"	6.02	114.3
RGMSW-125	5"	6.55	141.3
RGMSW-150	6"	7.11	165.1
RGMSW-150-US	6"	7.11	168.3
RGMSW-200	8"	8.18	219.1
RGMSW-250	10"	9.27	273.0
RGMSW-300	12"	10.31	323.9

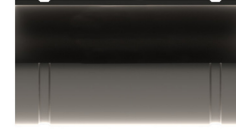
PART NUMBER	ROLLED GROOVE 316 S/S SCH40 SPIGOT		
	SIZE	WALL THICKNESS (mm)	O.D. (mm)
RG6SW-25	1"	3.38	33.7
RG6SW-32	1 1/4"	3.56	42.4
RG6SW-40	1 1/2"	3.68	48.3
RG6SW-50	2"	3.91	60.3
RG6SW-65-US	2 1/2"	5.16	73.0
RG6SW-65	2 1/2"	5.16	76.1
RG6SW-80	3"	5.49	88.9
RG6SW-100	4"	6.02	114.3
RG6SW-125	5"	6.55	141.3
RG6SW-150	6"	7.11	165.1
RG6SW-150-US	6"	7.11	168.3
RG6SW-200	8"	8.18	219.1
RG6SW-250	10"	9.27	273.0
RG6SW-300	12"	9.53	323.9

*Refer to Technical Data Section for Specifications - Page 356



PART NUMBER	GALVANISED PAINTED ROLLED GROOVE RIGID COUPLING (2068 kPa)
RGCLAMP-25	1"
RGCLAMP-32	1 1/4"
RGCLAMP-40	1 1/2"
RGCLAMP-50	2"
RGCLAMP-65	2 1/2"
RGCLAMP-65US	2 1/2"
RGCLAMP-80	3"
RGCLAMP-100	4"
RGCLAMP-125	5"
RGCLAMP-150	6"
RGCLAMP-150-US	6"
RGCLAMP-200	8"
RGCLAMP-250	10"
RGCLAMP-300	12"

PART NUMBER		ROLLED GROOVE SEAL
NITRILE	EPDM	
RGSBN-25	RGSEPDM-25	1"
RGSBN-32	RGSEPDM-32	1 1/4"
RGSBN-40	RGSEPDM-40	1 1/2"
RGSBN-50	RGSEPDM-50	2"
RGSBN-65	RGSEPDM-65	2 1/2"
RGSBN-65-US	RGSEPDM-65-US	2 1/2"
RGSBN-80	RGSEPDM-80	3"
RGSBN-100	RGSEPDM-100	4"
RGSBN-125	RGSEPDM-125	5"
RGSBN-150	RGSEPDM-150	6"
RGSBN-150-US	RGSEPDM-150-US	6"
RGSBN-200	RGSEPDM-200	8"
RGSBN-250	RGSEPDM-250	10"
RGSBN-300	RGSEPDM-300	12"



PART NUMBER	DOUBLE ROLLED GROOVE CARBON STEEL STD ADPATOR		
	SIZE	WALL THICKNESS (mm)	O.D. (mm)
RGDMS-25	1"	3.38	33.7
RGDMS-32	1 1/4"	3.56	42.4
RGDMS-40	1 1/2"	3.65	48.3
RGDMS-50	2"	3.91	60.3
RGDMS-65-US	2 1/2"	5.16	73.0
RGDMS-65	2 1/2"	5.16	76.1
RGDMS-80	3"	5.49	88.9
RGDMS-100	4"	6.02	114.3
RGDMS-125	5"	6.55	141.3
RGDMS-150	6"	7.11	165.1
RGDMS-150-US	6"	7.11	168.3
RGDMS-200	8"	8.18	219.1
RGDMS-250	10"	9.27	273.0
RGDMS-300	12"	10.31	323.9

PART NUMBER	DOUBLE ROLLED GROOVE 316 S/S SCH40 ADPATOR		
	SIZE	WALL THICKNESS (mm)	O.D. (mm)
RGD6S-25	1"	3.38	33.7
RGD6S-32	1 1/4"	3.56	42.4
RGD6S-40	1 1/2"	3.68	48.3
RGD6S-50	2"	3.91	60.3
RGD6S-65-US	2 1/2"	5.16	73.0
RGD6S-65	2 1/2"	5.16	76.1
RGD6S-80	3"	5.49	88.9
RGD6S-100	4"	6.02	114.3
RGD6S-125	5"	6.55	141.3
RGD6S-150	6"	7.11	165.1
RGD6S-150-US	6"	7.11	168.3
RGD6S-200	8"	8.18	219.1
RGD6S-250	10"	9.27	273.0
RGD6S-300	12"	9.53	323.9

*Custom Adapters Available On Request

*Refer to Technical Data Section for Specifications - Page 356



PART NUMBER		ANSI 150 lb ASME B16.5 FIXED FLANGE x INDUSTRIAL HOSETAIL
316 S/S	MILD STEEL	
AF36SIH-25-A1	AF3MSIH-25-A1	1"
AF36SIH-32-A1	AF3MSIH-32-A1	1 1/4"
AF36SIH-40-A1	AF3MSIH-40-A1	1 1/2"
AF36SIH-50-A1	AF3MSIH-50-A1	2"
AF36SIH-65-A1	AF3MSIH-65-A1	2 1/2"
AF36SIH-80-A1	AF3MSIH-80-A1	3"
AF36SIH-100-A1	AF3MSIH-100-A1	4"
AF36SIH-125-A1	AF3MSIH-125-A1	5"
AF36SIH-150-A1	AF3MSIH-150-A1	6"
AF36SIH-200-A1	AF3MSIH-200-A1	8"
AF36SIH-250-A1	AF3MSIH-250-A1	10"
AF36SIH-300-A1	AF3MSIH-300-A1	12"
AF36SIH-350-A1	AF3MSIH-350-A1	14"

* Also available in Floating Flanges

PART NUMBER		TAB 'E' AS2129 FIXED FLANGE x INDUSTRIAL HOSETAIL
316 S/S	MILD STEEL	
AF36SIH-25-E	AF3MSIH-25-E	1"
AF36SIH-32-E	AF3MSIH-32-E	1 1/4"
AF36SIH-40-E	AF3MSIH-40-E	1 1/2"
AF36SIH-50-E	AF3MSIH-50-E	2"
AF36SIH-65-E	AF3MSIH-65-E	2 1/2"
AF36SIH-80-E	AF3MSIH-80-E	3"
AF36SIH-100-E	AF3MSIH-100-E	4"
AF36SIH-125-E	AF3MSIH-125-E	5"
AF36SIH-150-E	AF3MSIH-150-E	6"
AF36SIH-200-E	AF3MSIH-200-E	8"
AF36SIH-250-E	AF3MSIH-250-E	10"
AF36SIH-300-E	AF3MSIH-300-E	12"
AF36SIH-350-E	AF3MSIH-350-E	14"

* Also available in Floating Flanges

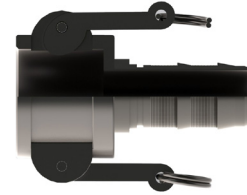
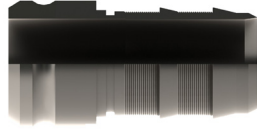


PART NUMBER		EN 1092-1 DIN 16 FIXED FLANGE x INDUSTRIAL HOSETAIL
316 S/S	MILD STEEL	
AF36SIH-25-D16	AF3MSIH-25-D16	1"
AF36SIH-32-D16	AF3MSIH-32-D16	1 1/4"
AF36SIH-40-D16	AF3MSIH-40-D16	1 1/2"
AF36SIH-50-D16	AF3MSIH-50-D16	2"
AF36SIH-65-D16	AF3MSIH-65-D16	2 1/2"
AF36SIH-80-D16	AF3MSIH-80-D16	3"
AF36SIH-100-D16	AF3MSIH-100-D16	4"
AF36SIH-125-D16	AF3MSIH-125-D16	5"
AF36SIH-150-D16	AF3MSIH-150-D16	6"
AF36SIH-200-D16	AF3MSIH-200-D16	8"
AF36SIH-250-D16	AF3MSIH-250-D16	10"
AF36SIH-300-D16	AF3MSIH-300-D16	12"
AF36SIH-350-D16	AF3MSIH-350-D16	14"

* Also available in Floating Flanges

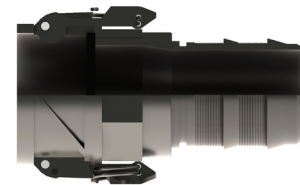
Specialised Encapsulated Fittings Available on request.





PART NUMBER	TYPE 'E' 316 S/S MALE CAMLOCK x INDUSTRIAL HOSETAIL
QL16SIH-08	1/2"
QL16SIH-12	3/4"
QL16SIH-16	1"
QL16SIH-20	1 1/4"
QL16SIH-24	1 1/2"
QL16SIH-32	2"
QL16SIH-40	2 1/2"
QL16SIH-48	3"
QL16SIH-64	4"
QL16SIH-96	6"

PART NUMBER	TYPE 'C' 316 S/S FEMALE CAMLOCK x INDUSTRIAL HOSETAIL (BN SEALS)
QL26SIH-08	1/2"
QL26SIH-12	3/4"
QL26SIH-16	1"
QL26SIH-20	1 1/4"
QL26SIH-24	1 1/2"
QL26SIH-32	2"
QL26SIH-40	2 1/2"
QL26SIH-48	3"
QL26SIH-64	4"
QL26SIH-96	6"



PART NUMBER	TYPE 'C' SAFLOK 316 S/S FEMALE CAMLOCK x INDUSTRIAL HOSETAIL (BN SEALS)
QL26SSAFIH-16	1"
QL26SSAFIH-24	1 1/2"
QL26SSAFIH-32	2"
QL26SSAFIH-40	2 1/2"
QL26SSAFIH-48	3"
QL26SSAFIH-64	4"

PART NUMBER	TYPE 'C' INSTA-LOCK 316 S/S FEMALE CAMLOCK x INDUSTRIALHOSETAIL (BN SEALS)
QL26SINIH-08	1/2"
QL26SINIH-12	3/4"
QL26SINIH-16	1"
QL26SINIH-20	1 1/4"
QL26SINIH-24	1 1/2"
QL26SINIH-32	2"
QL26SINIH-40	2 1/2"
QL26SINIH-48	3"
QL26SINIH-64	4"
QL26SINIH-96	6"

Specialised Encapsulated Fittings Available on request.