

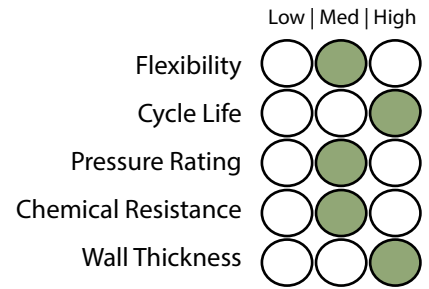


# EXPANSION JOINTS

## PTFE Lined Single Sphere Rubber Expansion Joint (REJPTFE)

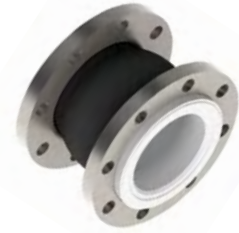
### PTFE Lined Rubber Expansion Joint - REJPTFE

**Part No.:** REJPTFE  
**Material:** EPDM, Neoprene (CR), Viton, Buna/Nitrile, Hyperlon, Natural Rubber  
**Food Grade:** White Nitrile (NBR) (Upon Request)  
**Liner:** PTFE  
**Construction:** Smoothbore Sphere  
**Profile:** Medium Flexibility / Medium Pressure  
**Vacuum Ring:** Available on Request  
**Size Available:** 1 1/4" - 24" (Larger sizes upon Request)  
**Temperature:** -15°C +115°C



#### Construction

**Use:**  
 PTFE LINED Rubber expansion joints are designed to alleviate piping stress, absorb pipe misalignment, compression and extension, noise and vibration, in a relatively short space.



Temperature Correction Factor						
80 °C	85 °C	90 °C	95 °C	100 °C	105 °C	115 °C
x 1.0	x 0.92	x 0.83	x 0.75	x 0.67	x 0.60	x 0.45

#### Specifications

Part Number	Nom Bore (mm)	Length (mm)	Max. Working Pressure (kPa)	Movements				Vacuum (mmHg)
				Axial Compression (mm)	Axial Extension (mm)	Horizontal Displacement (mm)	Angular Deflection (Deg)	
				REJPTFE-32	32	95	1000	
REJPTFE-40	40	95	1000	10	6	9	15	600
REJPTFE-50	50	105	1000	10	7	10	15	600
REJPTFE-65	65	115	1000	13	7	11	15	600
REJPTFE-80	80	135	1000	15	8	12	15	600
REJPTFE-100	100	150	1000	19	10	13	15	600
REJPTFE-125	125	165	1000	19	12	13	15	225
REJPTFE-150	150	180	1000	20	12	14	15	225
REJPTFE-200	200	210	1000	25	16	22	15	150
REJPTFE-250	250	230	1000	25	16	22	15	150
REJPTFE-300	300	245	1000	25	16	22	15	150
REJPTFE-350	350	255	1000	25	16	22	15	150
REJPTFE-400	400	255	1000	25	16	22	15	100
REJPTFE-450	450	255	1000	25	16	22	15	100
REJPTFE-500	500	255	1000	25	16	22	15	100
REJPTFE-600	600	260	1000	25	16	22	15	100

Additional sizes and working pressures available, contact us for more information

#### Applications

