

Lined Piping Systems - 90° Elbow

Lined 90° Elbow

Construction : Smoothbore

Pipe : Carbon Steel / Stainless Steel
(Other specialty metals on request)

Liner: PTFE, PFA, PVDF, PP, FEP, ETFE

Size Available : 1" - 12" (Larger sizes upon Request)

Vacuum : Full Vacuum

Temperature : -30°C to 260°C

Low | Med | High

Flexibility

Cycle Life

Pressure Rating

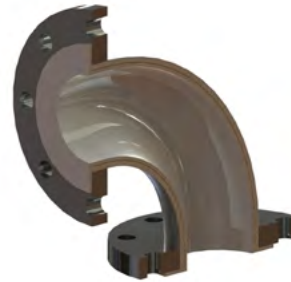
Chemical Resistance

Wall Thickness

Construction

Use:

Our range of products are used in various industries such as Chemicals, Refineries, Pesticides, Petrochemicals, Steel, Food-Processing, Beverages, Alcohols and Acids, Pharmaceuticals, Circuit Breakers, Fertilizers, Desalination.



Standards:

ASTM F1545, AS4041:2006 Class 1, ASME IX:2010

Specifications

Part Number:	Size	Face to Centre (X)	Liner Thickness	Flared Dia
	inch	mm	mm	mm
TLP90a-25 -AF3-AF3-b	1"	89	3.50	51
TLP90a-38 -AF3-AF3-b	1 1/2"	102	3.50	73
TLP90a-50 -AF3-AF3-b	2"	114	4.30	92
TLP90a-80 -AF3-AF3-b	3"	140	4.40	127
TLP90a-100 -AF3-AF3-b	4"	165	4.40	157
TLP90a-150 -AF3-AF3-b	6"	203	5.50	216
TLP90a-200 -AF3-AF3-b	8"	229	6.00	270
TLP90a-250 -AF3-AF3-b	10"	279	7.50	324
TLP90a-300 -AF3-AF3-b	12"	235	7.50	381

At temp(°C)	ANSI class 150	ANSI class 300
°C	kpa	kpa
40	1760	3160
100	1650	2740
150	1510	2430
200	1400	2080
250	1200	1720

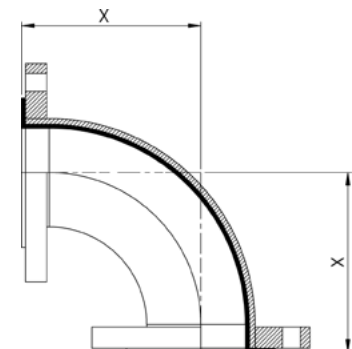
Part Number Key:

a = Pipe Material

6S = 316 Stainless Steel | 4S = 304 Stainless Steel | MS = Carbon Steel

b = 316 Stainless Steel Flange Type

A1 = ANSI 150lb | TE = Table E | TD = Table D | D16 = DIN 16



Applications

