

Lined Piping Systems - Concentric Reducer

Lined Concentric Reducer

Construction : Smoothbore

Pipe : Carbon Steel / Stainless Steel
(Other specialty metals on request)

Liner: PTFE, PFA, PVDF, PP, FEP, ETFE

Size Available : 1/2" - 12"
(Larger sizes upon Request)

Vacuum : Full Vacuum

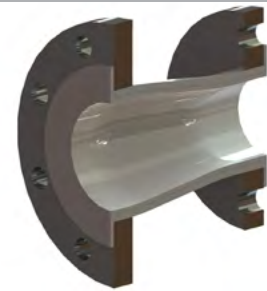
Temperature : -30°C to 260°C

	Low	Med	High
Flexibility	●	○	○
Cycle Life	○	○	●
Pressure Rating	○	○	●
Chemical Resistance	○	○	●
Wall Thickness	○	○	●

Construction

Use:

Our range of products are used in various industries such as Chemicals, Refineries, Pesticides, Petrochemicals, Steel, Food-Processing, Beverages, Alcohols and Acids, Pharmaceuticals, Circuit Breakers, Fertilizers, Desalination.



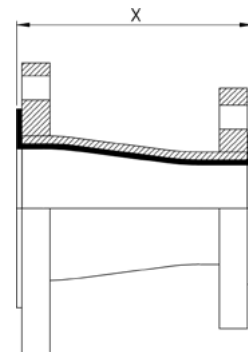
Standards:

ASTM F1545, AS4041:2006 Class 1, ASME IX:2010

Specifications

Part Number:	Flange Size		Face To Face (X)
	inch	inch	mm
TLPa-CR-25-12-b-b	1"	1/2"	114
TLPa-CR-25-20-b-b	1"	3/4"	114
TLPa-CR-38-25-b-b	1 1/2"	1"	114
TLPa-CR-38-25-b-b	1 1/2"	1"	114
TLPa-CR-50-25-b-b	2"	1"	127
TLPa-CR-50-38-b-b	2"	1 1/2"	127
TLPa-CR-80-38-b-b	3"	1 1/2"	152
TLPa-CR-80-50-b-b	3"	2"	152
TLPa-CR-100-38-b-b	4"	1 1/2"	178
TLPa-CR-100-50-b-b	4"	2"	178
TLPa-CR-100-80-b-b	4"	3"	178
TLPa-CR-150-80-b-b	6"	3"	229
TLPa-CR-150-100-b-b	6"	4"	229
TLPa-CR-200-100-b-b	8"	4"	279
TLPa-CR-250-150-b-b	10"	6"	305

At temp(°C)	ANSI class 150	ANSI class 300
°C	kpa	kpa
40	1760	3160
100	1650	2740
150	1510	2430
200	1400	2080
250	1200	1720



Part Number Key:

a = Pipe Material: 6S = 316 Stainless Steel | 4S = 304 Stainless Steel | MS = Carbon Steel

b = 316 Stainless Steel Flange Type: A1 = ANSI 150lb | TE = Table E | TD = Table D | D16 = DIN 16

Applications

