

### Piping Systems

**Construction :** Smoothbore

**Pipe :** Carbon Steel / Stainless Steel  
(Other specialty metals on request)

**Size Available :** 1" - 14"  
(Larger sizes upon Request)

**Vacuum :** Full Vacuum

**Temperature :** 900°C

	Low	Med	High
Flexibility			
Cycle Life			
Pressure Rating			
Chemical Resistance			
Wall Thickness			

#### Construction

**Use:**

Our range of piping systems are used in various industries such as oil and gas refineries, alumina refineries, chemical process plants, aluminium smelters, tunnels, water treatment plants, food & pharmaceutical plants.

**Welding Standards:**

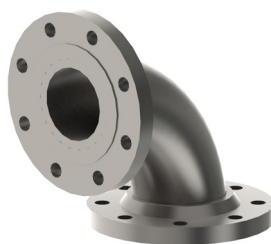
- AS4041:2006 Class 1
- ASME IX:2010
- ASME B31.3: 2008
- AS/NZS 2992:1998

**Welding Processes:**

- Gas Tungsten Arc Welding (GTAW)
- Metal Inert Gas Welding (MIGW)
- Manual Metal Arc Welding (MMAW)
- Flux Cored Arc Welding (FCAW)

**Piping Standards:**

- ANSI
- ASME
- ISO
- DIN



#### Applications

