



# EXPANSION JOINTS

## Single Hinge Expansion Joint (HEJ)

### Expansion Joint - HEJ

**Part No.:** HEJ

**Construction:** Convoluted

**Material:** 304, 321, 316, Incoloy, Inconel, Nickel, Hastelloy

**Profile:** Medium Flexibility / High Pressure

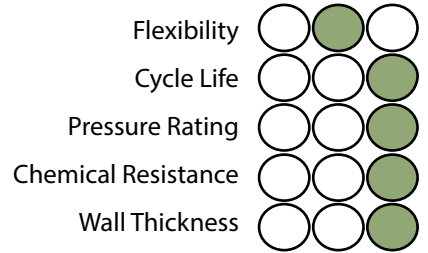
**Liner:** Optional

**Size Available:** 2" - 24"

(Larger sizes upon Request)

**Temperature:** -196°C +900°C

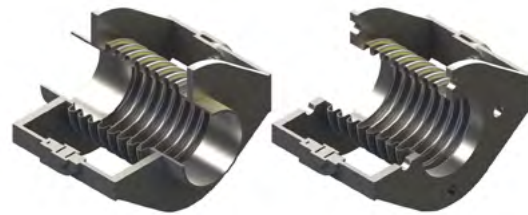
Low | Med | High



### Construction

#### Use:

Used for absorbing angular movement in one plane only, movement of bellows is more controlled. Pressure thrust is restrained by the hinges.



### Specifications

Part Number	Nom	Length		Max. Working Pressure kPa	Movements		Spring Rate NM/Deg
	Bore	Flanged	Weld Ends		± Degrees	Total Degrees	
	(mm)	(mm)	(mm)		(mm)	(mm)	
50-HEJ-240	50	145	218	240	18	36	0.2
50-HEJ-700	50	145	218	700	18	36	0.6
50-HEJ-1400	50	145	218	1400	18	36	0.6
65-HEJ-240	65	180	234	240	18	36	0.2
65-HEJ-700	65	180	234	700	18	36	0.7
65-HEJ-1400	65	180	234	1400	18	36	1.3
80-HEJ-240	80	180	240	240	18	36	0.2
80-HEJ-700	80	180	240	700	18	36	0.6
80-HEJ-1400	80	180	240	1400	17	34	2.2
100-HEJ-240	100	190	278	240	18	36	0.3
100-HEJ-700	100	190	278	700	18	36	2.2
100-HEJ-1400	100	190	278	1400	17	34	4.6
125-HEJ-240	125	215	313	240	18	36	1.9
125-HEJ-700	125	215	313	700	18	36	3.4
125-HEJ-1400	125	215	313	1400	14	28	6.6
150-HEJ-240	150	215	338	240	18	36	2.3
150-HEJ-700	150	215	338	700	18	36	3.9
150-HEJ-1400	150	215	338	1400	14	28	18.2
200-HEJ-240	200	225	330	240	18	36	2.6
200-HEJ-700	200	255	330	700	17	34	9.8
200-HEJ-1400	200	255	330	1400	13	26	50
250-HEJ-240	250	245	341	240	18	36	4
250-HEJ-700	250	245	341	700	18	36	17

Additional sizes available. Visit [www.hoseflex.com](http://www.hoseflex.com) for our complete range

EXPANSION JOINTS 1 2 3 4 5 6 7 8 9 10