

External Pressurised Expansion Joints (XT)

Expansion Joint - XT

Part No.: XT

Construction: Convoluted

Material: 304, 321, 316, Incoloy, Inconel, Nickel, Hastelloy

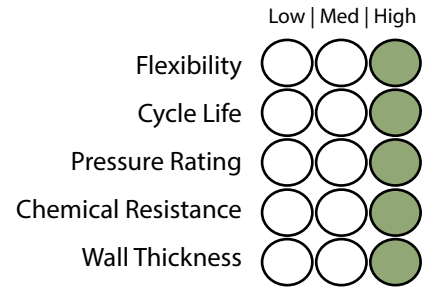
Profile: High Flexibility / High Pressure

Liner: Standard Flow Liner

Size Available: 1" - 10"

(Larger sizes upon Request)

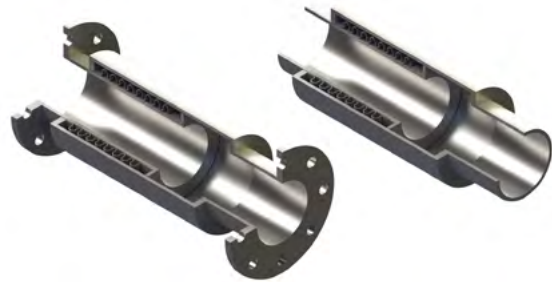
Temperature: -196°C +900°C



Construction

Use:

Used for absorbing thermal expansion in exhaust, gas ducting and low pressure systems. Pressure thrust will be transmitted onto pipeline. Internal flow liners for eliminating velocity and flow problems fitted as standard.



Specifications

Part Number	Nom	Length		Max. Working Pressure kPa	Movements	Pressure Thrust KN
	Bore	Flanged	Weld Ends		Axial	
	(mm)	(mm)	(mm)		(mm)	
25 XT-1000-100	25	660	660	1000	100	5.4
25 XT-1000-150	25	914	914	1000	150	5.4
25 XT-1000-200	25	1168	1168	1000	200	5.4
25 XT-2000-100	25	660	660	2000	100	11.5
25 XT-2000-150	25	914	914	2000	150	11.5
25 XT-2000-200	25	1168	1168	2000	200	11.5
40 XT-1000-100	40	660	660	1000	100	7.9
40 XT-1000-150	40	914	914	1000	150	7.9
40 XT-1000-200	40	1168	1168	1000	200	7.9
40 XT-2000-100	40	660	660	2000	100	16.6
40 XT-2000-150	40	914	914	2000	150	16.6
40 XT-2000-200	40	1168	1168	2000	200	16.6
50 XT-1000-100	50	660	660	1000	100	9.5
50 XT-1000-150	50	914	914	1000	150	9.5
50 XT-1000-200	50	1168	1168	1000	200	9.5
50 XT-2000-100	50	660	660	2000	100	19.9
50 XT-2000-150	50	914	914	2000	150	19.9
50 XT-2000-200	50	1168	1168	2000	200	19.9
65 XT-1000-100	65	660	660	1000	100	12.2
65 XT-1000-150	65	914	914	1000	150	12.2
65 XT-1000-200	65	1168	1168	1000	200	12.2
65 XT-2000-100	65	660	660	2000	100	24.6
65 XT-2000-150	65	914	914	2000	150	24.6

Additional sizes available. Visit www.hoseflex.com for our complete range