



# RUBBER & COMPOSITE HOSE

## Rubber Hose - Industrial

### Super Abrasion Resistant Suction/Delivery Hose

**Colour:** Black

**Tube:** NR/BR blend Super Abrasion Resistant (S A R) Rubber

**Cover:** NR/BR blend Super Abrasion Resistant (S A R) Rubber

**Reinforcement:** Spiral Synthetic Fabric with steel wire for full suction capabilities

**Size Available:** 2" - 24"

**Temperature:** -30°C +70°C

Low | Med | High

Flexibility

Cycle Life

Pressure Rating

Chemical Resistance

Wall Thickness

#### Construction

**Use:**

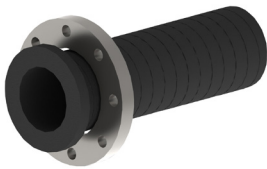
For suction, and high pressure when discharging of abrasive slurry materials in the mining, dredging and other industries



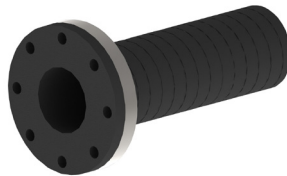
#### Specifications

Size		Max. Working Pressure		Weight
inch	O.D (mm)	PSI	kPa	Kg/m
2"	76	200	1379	3.4
3"	102	200	1379	5.0
4"	129	200	1379	6.8
5"	158	200	1379	9.2
6"	184	200	1379	12.8
8"	238	200	1379	18.8
10"	292	200	1379	24.4
12"	344	200	1379	32.4
14"	394	200	1379	34.2
16"	448	200	1379	46.6
18"	501	200	1379	53.6
20"	551	200	1379	59.4
24"	660	200	1379	83.4

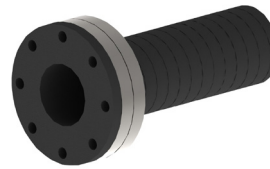
#### End Connections



Beaded (Rotating) Flanges



Fixed Flanges



Double Flanges



Spigot Flanges

#### Applications

