

Piping Systems

Piping Systems

Construction : Smoothbore

Pipe : Carbon Steel / Stainless Steel (Other specialty metals on request)

Size Available : 1" - 14" (Larger sizes upon Request)

Vacuum : Full Vacuum

Temperature : 900°C

	Low	Med	High
Flexibility			
Cycle Life			
Pressure Rating			
Chemical Resistance			
Wall Thickness			

Construction

Use:

Our range of piping systems are used in various industries such as oil and gas refineries, alumina refineries, chemical process plants, aluminium smelters, tunnels, water treatment plants, food & pharmaceutical plants.

Welding Standards:

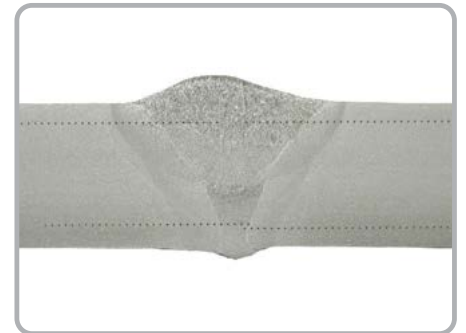
- AS4041:2006 Class 1
- ASME IX:2010
- ASME B31.3: 2008
- AS/NZS 2992:1998

Welding Processes:

- Gas Tungsten Arc Welding (GTAW)
- Metal Inert Gas Welding (MIGW)
- Manual Metal Arc Welding (MMAW)
- Flux Cored Arc Welding (FCAW)

Piping Standards:

- ANSI
- ASME
- ISO
- DIN



Applications

